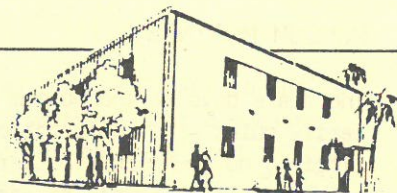


The WHITTIER GAZETTE



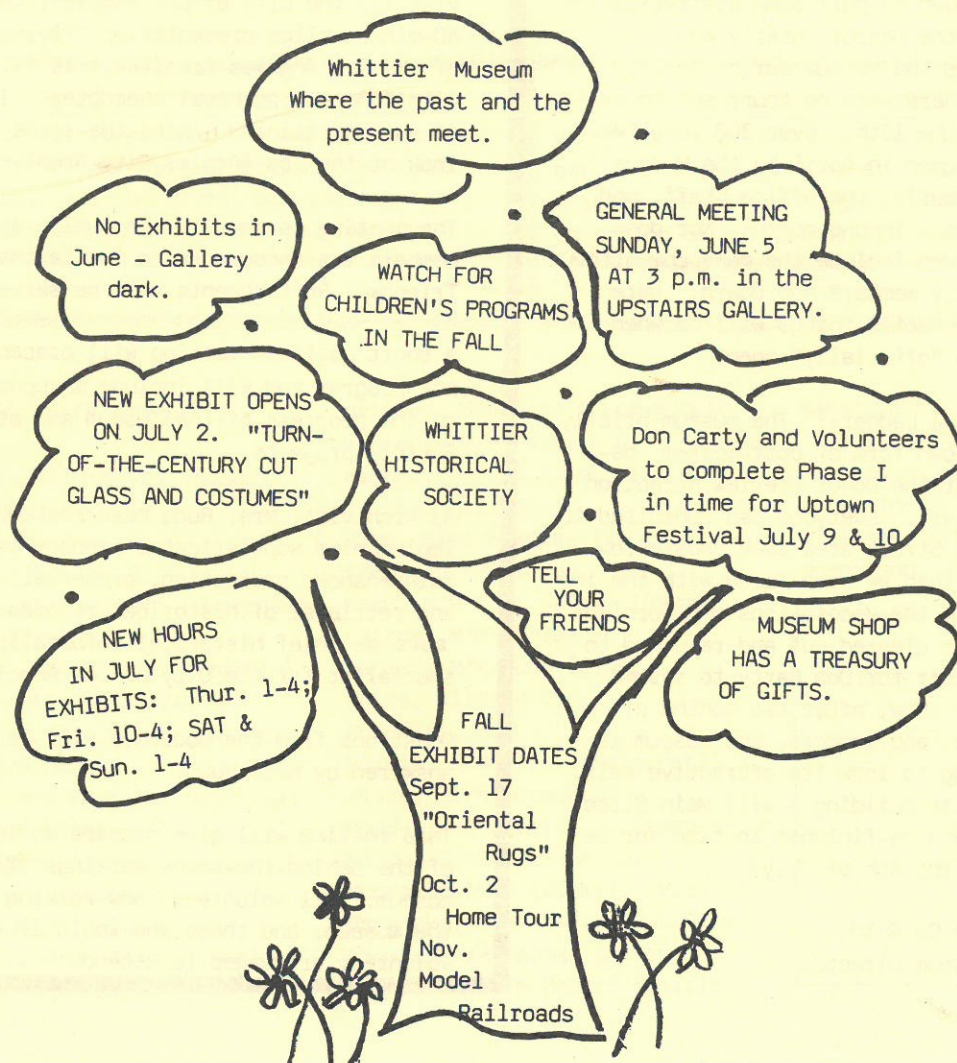
WHITTIER, CALIFORNIA

THE NEWSLETTER OF THE WHITTIER HISTORICAL SOCIETY

Vol. IX

JUNE 1983

No. 2



MUSEUM MUSINGS:

There are days at the Museum when it seems eerily quiet - no construction, no telephone ringing, no thunderous patter of 60 feet climbing the stairwell to see the exhibit. Inside the office Nancy writes the checks and Mina updates the donor files; outside the office Wendell refinishes a table for the Queen Anne and Len paints yet another wall. These are the quietest people!

You forget so much is happening until the day you sit down to pull some statistics together for the Board: Nearly 400 people visited the museum during April, even though there were no tours and no exhibits until the 15th. Over 300 volunteer hours were logged in April by the Museum Docents, the Buffs, the Office staff, and by NCL workers - in one month! Nor does that figure even include the many committee hours put in by members and Board. Dare we wonder how hectic things will be when the museum is "officially" open?

Nails, Planks & Ladders: The museum briefly suffered its own form of post-mortem depression after the Donor Preview Reception in late February. Everyone had conspired to make the Main Street area look "postcard-ready. But then we were faced with the inevitable: all the decorations and furnishings had to be cleared out and returned to storage in order for Don Carty to resume construction. Now, after two months of nails, planks, and ladders, the museum is again starting to look its attractive self. The suspense is building - will Main Street and the Diorama be finished in time for us to celebrate the 4th of July?

Joe Da Rold
Museum Director

HISTORICAL SOCIETY SETS GENERAL MEETING JUNE 5

*with slide presentation by
Los Angeles City Archivist.*

The meeting will be held in the Upstairs Gallery of the Museum, 6755 Newlin Avenue, Sunday, June 5 at 3 p.m.

Mrs. Hynda Rudd joined the City Clerk's office in 1980 becoming the first archivist for the City of Los Angeles. Her 40-minute slide presentation "Treasures of the Los Angeles Archives," is filled with humorous archival anecdotes. It is an intertaining behind-the-scene look at the Los Angeles City Archives.

The meeting is open to the public and members are encouraged to invite their friends. Refreshments will be served.

A short business meeting will precede the program and will include an update on the progress of the museum and other Society projects.

As Archivist, Mrs. Rudd has created and implemented sophisticated procedures for maintenance, protection, preservation, and retrieval of historical records. She acts as chief historical information specialist for the City of Los Angeles.

Questions from the audience will be answered by Mrs. Rudd.

This meeting will give members an idea of the behind-the-scene workings of a museum. All volunteers now working at the museum, and those who would like to volunteer are urged to attend.

TURN-OF-THE-CENTURY CUT GLASS AND CLOTHING - EXHIBIT NEWS

Opening July 2 will be a fascinating exhibit: TURN-OF-THE-CENTURY CUT GLASS AND CLOTHING. The cut glass is from the collection of Phillip Roa, who has 300 pieces in his remarkable collection. Goblets, milk pitchers, water pitchers, bowls - all patterns are in clear glass and of a variety of patterns.

Two special evenings have been planned in conjunction with this exhibit. Please mark your calendars and plan to attend; both are on Thursday evenings at 7:30.

Also in the main gallery, adjacent to the cut glass, will be a display of period dresses from the collection of Mrs. Joy Reed. Those of you who attended the Fashion Show Fund-raiser will want to see the dresses close up. These dresses have been purchased by Joy on her trips to Europe with the Horseless Carriage Club. Joy selects an appropriate dress from her collection whenever she participates in an automobile rally sponsored by the group. Augmenting both exhibits will be furnishings from the Museum's collection.

JULY 7 - PIECE & PATTERN IDENTIFICATION

Mr. Roa will be present to help you identify pieces from your own collection. No cost appraisals will be given, but you might discover a treasure from among your own cut glass collection.

JULY 14 - RECEPTION & LECTURE - A member's reception. You may bring a friend or neighbor, and encourage him/her to support the museum. Mr. Roa will give a half-hour presentation on cut glass, its history, and his own experience as a collector.

ASSOCIATE MEMBERS

Alverson, M/M Harvey (Madge)
Ball, Mrs. Virginia
Bank of America
Barmore, Mrs. M. G.
Behrens, D/M Herbert (Hortense)
Brown, John M., Jr.
Chapman, M/M Robert (Virginia)
Claxton, M/M Myron (Nancy)
Clevenger, M/M Clyde (Patricia)
Cole, M/M Donald
Coover, M/M Francis (Delphine)
Dahl, M/M Stanley
Friendly Hills Women's Club
Garden Section
Gordon, M/M Varlie (Alva)
Hathaway, M/M Richard (Nadine)
Haworth, M/M Edward C. (Mary)

Hellman, Biddison & Loevenguth
Kennedy, M/M Patrick F. (Claudia)
Kimber, Mrs. J.A. Morris
(Evangeline)
King, Miss Frances Irene
Knupp, Dr/M Wilbur
Kolb, M/M C.T. (Dick) (Grace)
Latson, M/M Harley
Maples, M/M Hugh (Janet)
McGee, Mildred P.
McKenzie, Ann
Merkle, M/M Elmer (Margaret)
Mills, Dr/M Eugene S.
Moody, M/M Charles D. (Leah Marie)
Moody, Construction Co.
Moorhead, M/M Tolbert, (Virginia)
Radomski, M/M Edward (Patricia)
Sawyer, M/M Thomas (Lorraine)
Thompson, Dr/M Robert (Shirley)

Wakabayashi, M/M
Shigeru (Chiyeka)
Wilkinson, M/M H. S.
(Nadine)
Williams, M/M Robert
Woehrmann, M/M Robert

OUR SYMPATHY IS
EXTENDED TO THE
FAMILIES OF

MEL RICH

and

MICHAELINE MAJKA

President's Corner. . .

ANNOUNCEMENT OF COMMITTEE APPOINTMENTS - Myron Claxton, President

It's very gratifying to know that so many members are volunteering their time and expertise to their Society and Museum. Appointments of many chairmen have been made for most of our committees. As you read this list, won't you select a committee on which you would like to serve? It's fun to be a part of the "building process." All of you are needed, and you all have a special talent to share.

BYLAWS, Mary Burkhalter

MUSEUM DOCENT COMMITTEE, Diane Sattler

MUSEUM SHOP, Ruth McFarland

FINANCE

ENDOWMENT, TRUST & MGMT., Earl Myer

MUSEUM BUFFS (Open)

BUDGET, Evelyn Larkins

INSURANCE, Earl Myer

PERSONNEL COMMITTEE, Don Moore

FINANCIAL DEVELOPMENT

GRANTS, Sylvia Foltz, Sue Settlage

FUND DEVELOPMENT, Lee Owens

MEMBERSHIP, Phyllis Pearce

ASSOCIATE Program, Evelyn Stebbins

WAYS & MEANS, Virginia Boles

PLANNED GIVING (Endowments, Wills, Gifts, SUPPORT GROUP

& Trusts), Mynatt Smith

PROGRAM & EXHIBITS

TRAVELING EXHIBITS (Open)

MAIN EXHIBITS & DEVELOPMENT, Bob Halliday

CHILDREN'S MUSEUM, Ginny Ball

SPECIAL EXHIBITS & PROGRAMS (Open)

POLICY & ETHICS, Virginia Boles

HOSPITALITY, Francine Rippy

TELEPHONE, Mary Lee Holton

HISTORIAN, Frances Pedretti

PUBLIC RELATIONS

PUBLICATIONS, Virginia Mathony

SPEAKERS' BUREAU, Virginia Mathony

PUBLICITY, Phil Wintner

SPECIAL EVENTS (Open)

TOURS (Open)

PROGRAMS & MEETINGS, Mark Morris

ACQUISITIONS & REGISTRATION, Pat Shiefly

ACCESSIONS, Betty Kaessner

ARTIFACTS, Mary Ann Rummel

CURATOR, Owen A. Lampman

LIBRARY, Kenny Ball

LOANS & ARTIFACTS (Open)

RECOGNITION & AWARDS, Fred Bewley

HISTORIAN OF THE YEAR (Open)

Special Awards (Open)

BUILDING & MAINTENANCE, Don Carty & Ed Irving

DOCENTS

FRIENDS OF THE BAILEY HOUSE, Jean Arbuckle

PIO PICO DOCENTS, Claire Radford

NOMINATING COMMITTEE, Pat Shiefly, Ruth
McFarland

MUSEUM COMMITTEE, Roger Wolcott

RESEARCH COMMITTEE

ORAL HISTORY, Wilma Herzog

Historical Markers, (Open)

VILLAGE FESTIVAL IN JULY

POPCORN, LEMONADE AND PEANUTS WILL BE THE ORDER OF THE DAY (two days, actually) at the Whittier Village Fourth Annual Festival. Scheduled for July 9 and 10, the fair will run from 10 a.m. to 12 midnight on Saturday, and 12 noon to 10 p.m. on Sunday.

In addition to refreshments, the WHS Booth will also have a "Face Painting" table for kids. The Booth will have a variety of designs from which the kids can choose, and volunteers will do the painting for a nominal charge. Proceeds will help defray the cost of building the Children's Museum. National Charity League members have signed up for 132 hours of volunteer service to help WHS and the Museum during the Festival.

The activities for WHS are being coordinated by Virginia Boles, and the face-painting by Dee Tenney and Corky Rich.

If you'd like to help, call Virginia at 691-4227.

MUSEUM WISH LIST

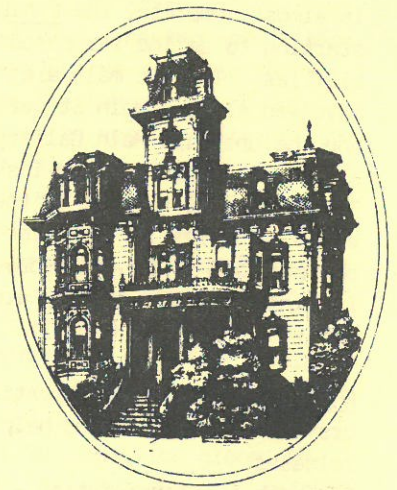
Toys
Ice Box
Bicycle
Feed Bag
Milk Cans
Hat Stand
Grist Mill
Water Pump
Bee Smoker
Egg Candler
Eye Glasses
Player Piano
Cracker Tins
Block & Tackle
Light Fixtures
Carpenter Tools
Honey Extractor
Forge & Bellows
Hoosier Cabinet
Sheet & Cow Gear
Wall Thermometer
Sewing Equipment

Churn
Bottles
Hay Hook
Tricycle
Incubator
Foot Stool
Wax Knives
Horse Tack
Door Ringer
Barber Pole
Chaps, spurs
Stereo Camera
Bee Equipment
Locks, Padlocks
Nixon Mementos

Tank vacuum with attachments
Hangers - strong wire
or wood
Goat or Pony Cart
Firemen's Equipment
Outside Knife Switch
Horse Grooming Tools
Surveyor's Equipment
Phonograph - Cylinder
Baskets (peck and Bushel)
Milk, Cream Separator
Portable Writing Desk
Oil Industry Articles
Stove (coal, oil or other)
Clothes: adult, boy's and
girl's.
Porcelain Faucet Handles
Indian or Mexican Life
re Whittier

If you have any of the above items or know of anyone who does and would like to donate them for the pleasure of many, please call Owen A. Lampman. Curator at 945-3871.

*Governor's Mansion, Sacramento, CA
Built in 1877 for Albert Gallatin, this
Victorian was purchased in 1903 by
the state and used as the governor's
official residence until 1964. Its 23
rooms are now used as a museum.*



COMMITTEE NEWS

One way to get involved with WHS and the Museum is to join a committee, whether it be a docent group (we have three) or an operating program committee, we can use your help. We have a committee for everything and a sub-committee for everything else!

Two of the busiest committees these last few months have been EXHIBITS and GRANTS:

Grants Committee has developed a Fact Sheet and a Donations "Wish List" for the museum to alert prospective donors to our current needs and upcoming projects. They have sent out requests for contributions to some 20 local service clubs and 200 area foundations. Two grant proposals have been submitted: one to the California Arts Council; the other to the American Association of Museums. Additional proposals are being developed for the National Endowment for the Arts and the National Endowment for the Humanities. The Grants Committee is co-chaired by Sue Settlage and Sylvia Foltz.

Now that the Museum is a reality and Phase I is almost complete, the Exhibits Committee is starting to define its purpose and responsibilities. The two main areas in which it is involved are the Main Street Exhibit Cases and the upstairs Main Gallery. It was this group that organized and installed the "OUR TOWN" exhibit, as well as the Art Adventure Workshop Series for children. Under the chairmanship of Bob Halliday, it has recently targeted the following areas for involvement:

Publicity - Obtain information from collectors and exhibitors, and help prepare press releases.

Research & Interpretation - Do library

research for background information on upcoming exhibits.

Main Street Exhibits - Contact collectors, schedule and install displays in exhibit cases.

Auxiliary Activities - Help plan lectures, workshops, etc., in conjunction with Museum displays and exhibits.

Opening Night - Assist with last minute details related to openings, including coordination with Reception Committee.

Technical Operations - Help plan layout and help set up the gallery exhibits. Skills are not essential, but energy and dependability are required.

If you have an artistic flair, a scholarly mien, a way with words, or a way with a hammer, the Exhibits Committee needs you. The Committee is seeking at least 10 new members to help get all the above areas off the ground.

Call Joe at the Museum (945-3871) to join any of the above committees.

LEGACIES

The Whittier Historical Society Endowment has been established with Mrs. Doyle Taylor, Hubert Perry and Earl Myer as trustees. The endowment is a basic key to the survival and growth of the society and its museum.

Several members have already included the endowment in their wills. Only the interest from investing the funds is used. . . the principal remains "forever". If you wish to join them, you may call your attorney, although a holographic codicil may be written as follows:

"I give and bequeath to the Whittier Historical Society, a non-profit corporation created under the laws of the State of California, located at Whittier, CA, the sum of \$ _____ for the Society's permanent Endowment Fund."

RECALLING PIONEER DAYS

"UNCLE JONATHAN"

The pattering hooves of two swift horses, a stentorian sneeze, and a characteristic clearing of the throat resounded through the stillness of the mesa. Then Rebecca Bailey, waiting expectantly in the little old ranch house against the hills, knew that Jonathan Bailey was back from Los Angeles.

If it happened to be Saturday, the dainty, quick-witted wife, known as a "belle" in her youth, felt doubly relieved, for her stalwart husband, a great-hearted pioneer 63 years young, was returning with \$500 in gold to pay off the employees of the Pickering Land and Water Company, of which he was president.

On all such trips, however, it was always broad daylight when Jonathan got home, for "Jimtown" was not a safe place to pass through after dark. Even so there was the wide mesa with not a house between the Laguna saloon, just out of Los Angeles and the Pio Pico mansion; and others might have swifter and overtaking horses, with a gun perhaps. (Jonathan would not carry a gun in spite of protestations.) Then there were both the old and new rivers to be forded, with their menacing quicksand.

Arriving home, Jonathan's first concern was to know how "mother" felt, for Rebecca was always frail in health and her soul craved the never-failing solicitude which was so lavishly and generously bestowed upon her.

Besides the gold pieces brought back, the chances were there would be a plentiful supply of groceries, in readiness for

the hospitality which both business and the pioneer life demanded of the old ranch house.

The men were paid off. Night came. In the living room were assembled those under the ranch house roof--perhaps four persons. According to his habit, Jonathan read from the old family Bible, some beautiful sustaining. Psalm - "He restoreth my soul". This reading was followed by a simple, direct, brief prayer invoking aid in practical living which gave evidence in itself of a sincere faith in the answer.

In truth Jonathan Bailey had a soul which was renewed continuously. He had a fresh, optimistic outlook on life which faith in God and man inevitably bestows. He was fun-loving. He liked a practical joke - and consequently became a recipient of them himself. He was always propounding something for one to wonder over - "What does thee think, I saw a white blackberry today. There must have been in him a hidden reason for this happy attitude.

In the family there was often comment that "Grandfather was always having some mishap to his head, but unlike most people, instead of getting the sense knocked out, grandfather seemed to acquire more of it." When a youth in Ohio, he was kicked in the head by a colt; later he had a sunstroke; in Pasadena, he was tossed over the fence by a frenzied cow separated from her calf; in Los Angeles, he was struck in the head with a stone thrown by a white man but intended for a Chinaman - in a time of labor disputes. Because of all this, Jonathan's head always hurt him, but instead of making it a reason for emanating gloom, he choose to ignore it. But when the twinkle in his blue eyes gave way to a gently sad

and far-away expression, one was reminded without words of the ever-present pain.

Perhaps this is why he so loved to have his head rubbed by his grandchildren, as he sat in characteristic pose with both hands on the curve of the "Shepherd's cane." He would tell interesting stories, and ask thought-provoking questions or just sit in gracious silence. And what strange treasure one always found under the thick, tousled, iron-gray hair - a penny, pennies! and when surely, one had found the last, by some magic known only to grandfather there were always more! This unique copper mine, grandfather's stories or just his restful presence and the inevitable peppermint candy stored in little bags in his capacious pockets, always made the rubbing of grandfather's head a never-ending childish delight.

In fact, grandfather had so much boyishness in his own nature that he understood youth the better. When a family of his grandchildren came from an Ohio farm, he had a wagon load of oranges hauled in the very next day from his Duarte ranch. Wagon loads of apples were common enough to them but oranges were always a rare treat - and here was grandfather saying to them over the luscious fruit, "Now eat all you want." It was like living in a fairy tale with grandfather waving the magic wand. His grandchildren never guessed then that he was having a lot of fun too.

But this pioneer had fun in all sorts of practical ways as well - as one knew by the chuckle when he told this story. In the very first days of the boom especially, demands upon the old ranch house as a caravansary were great and it was often hard to get domestic help. So, as usual, necessity became the mother of invention. His son and wife, Mr. and Mrs. Edwin Bailey

lived in his house in Los Angeles located on the east side of North Olive Street between Second and Third. When Jonathan needed help, he would spread a sheet on one of the big pepper trees and Annie Bailey seeing it with field glasses from her back porch, would saddle her pony and gallop to Whittier to help out in the emergency. Not once, but many times was this "telegraphy" system used with good results.

Jonathan Bailey at 68, assuming the duties of helping launch a new town in the glamorous west, was not inconsistent with his past; for he had lived through pioneering days in Ohio - log swellings, schoolhouse floors of dirt, harvesting with the hand scythe and threshing with the flail. Produce was hauled 50 miles in a wagon to find a market; mail was received at rare intervals from irregular stage routes. He rode on the first railroad and had many other experiences relative to the emerging age of mechanics and invention. Like every true pioneer, he had a sturdy soul, a strong body, and a steadily forward look.

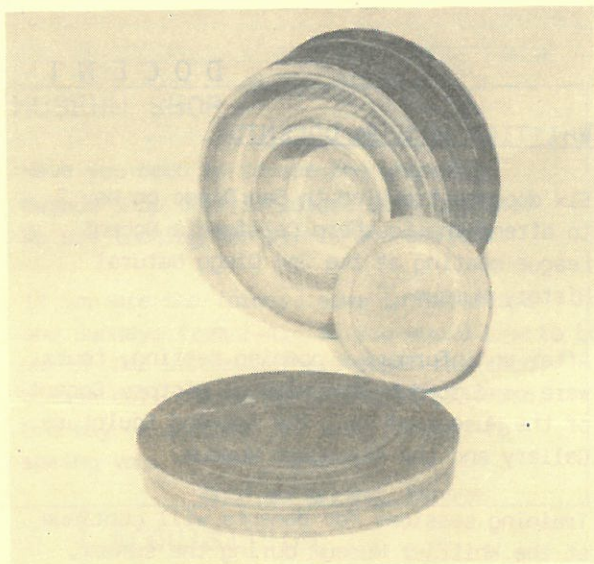
It was not strange then, that he and his frail wife so carefully guarded through the years, should live to celebrate their golden wedding. It was a happy event for them - with the gathering of a large number of their friends and well wishers under the pepper trees to the east of the ranch house where a picnic dinner was served. But all good things must come to an end - so "mother" must have thought, for after the guests had gone and while she was in the "cellar," (a plastered room under the "woodhouse," where the food was kept) Jonathan, thinking no one was there, locked the door and went downtown. There his good wife remained for an hour or two - her thoughts to be imagined - until her unsuspecting partner returned and released her. Jonathan Bailey was not a college man

Jonathan, cont'd.

in the sense of having a degree; but he was deeply interested in education which for him meant not in word only, but in deed. With unremitting effort, he secured the first endowment for Wilmington College in Ohio. It was said that he knew every man personally in Clinton County, so that he had the hospitality of all the apple orchards as he drove through the county on this college mission. He was always interested in Whittier College and was solicitous to his last days of its welfare.

Dauntless at 68, he dared to play the pioneer. Sturdy in physical vigor, he was a familiar figure riding over the hills on his yellow mustang pony, stopping now and then as he contemplated the scene below, no doubt dreaming of the Whittier to be. Mentally vigorous, he coveted for youth the chance to acquire the formal education which had been denied him. In-nately religious, he therefore believed in its practical value and he was so sincere in his belief that he attracted rather than repelled men. Such was the altogether gallant Virginia-born gentleman, "Uncle Jonathan" to his beloved townsmen.

(Written by Miss May Hunt, a great, great granddaughter of Jonathan and Rebecca Bailey. The article was prepared by the Writer's section, AAUW, Whittier Branch, as their contribution to the success of the 50th Birthday celebration May 9-16, 1937.)



WHAT IS IT?

"Well, the chad and the salmon are running; the eels are headed out to sea; the corn is up and most chores are done!

"It is time to grab the tackle box and head on down to the old stream. I hope I don't run into any of those blasted British Patrols. This war has gone on for too long. Three years now. My! My!

"Let's see what is in this box. There is enough line on the back side, but I think I'll have to put some more in the top here. I'd better put some more hooks in the inner compartment. I hope Mr. Franklin invents a better way of putting these fishing lines out than by hand. . ."

These might be some thoughts running through Mr. John Bibby's mind in 1779 when this fishing line tackle box was dated.

Thanks to the estate of Gladys Elizabeth Hartley from which the Museum received this gift.

Owen A. Lampman, Curator

DOCENT NEWS

WHITTIER MUSEUM DOCENTS

Six docents traveled to San Diego on May 2 to attend the Southern California Docent League meeting at the San Diego Natural History Museum.

After an informative opening meeting, tours were conducted by the Natural History Docents of the Museum of Man, the Art and Sculpture Gallery and the Aerospace Museum.

Training sessions for docents will continue at the Whittier Museum during the summer. Please call me or the Museum if you are interested in serving as a docent. Meetings are held on the last Monday of the month at 3 p.m.

Diane Sattler, Chairman

PIO PICO DOCENTS

Ten of our members also traveled to San Diego to attend the Docent League meeting. On the way back we stopped at the Los Flores Adobe at Camp Pendleton and had a very interesting tour.

Our festival on May 15 was a success and our next project will be a booth at the Los Angeles County fair in Pomona where we will try for one of the prizes.

New officers are: Claire Radford, chairman; Varlie Gordon, representative to the WHS Board; Martha Russell, secretary; Jill Waters, treasurer; Ella Stanfield, publicity; and Virginia Mathony, gift shop.

The Mansion is open for tours from 1-4 p.m. each Wednesday through Sunday. Large groups should make reservations. 695-1217.

FRIENDS OF THE BAILEY HOUSE

A visit to the Bailey House this spring is like stepping back in time to a garden of the early 1900's. The pink and white single-blossom hollyhocks are an introduction to an old-fashioned garden.

Thanks to a new groundskeeper employed by the city, and the efforts of Adele Nederburgh and her husband, the area around the Bailey House is full of interesting old-time plants.

On the east side of the house, along with the giant cactus is another native California plant - the Matilleja Poppy which is about to burst forth with large, fragrant, white blossoms. On the west side, to replace a hibiscus bush, is a new Weigela bush, a flowering shrub that was popular in the early days.

The Cecile Brunner rose, planted on the east side of the steps, which was presented to the Bailey House by some brownie Scouts this year, is blooming. And the back slope is almost covered with creeping Myrtle, a typical ground cover that was used in the early days of Whittier.

The Bailey House, which is open on Sundays and Wednesdays from 1-3 p.m. will be closed on Father's Day. In May we were happy to show 66 third graders from Phelan School through the house. We welcome groups which make reservations.

Marge Friedhof, Publicity
699-8789

REMINDER

The museum will be closed to the public weekends in June to allow for the changing of exhibits. It will reopen on July 2 with the TURN-OF-THE-CENTURY CUT GLASS AND CLOTHING EXHIBIT. The hours have been extended for July. The exhibits may be viewed Thursday, Friday, Saturday, or Sunday from 1-4 p.m. The office will continue to be open from 10 a.m. to 4 p.m. Tuesday through Friday.

MUSEUM SHOP

Have you been in to see the charming Museum Shop that is loaded with goodies? We are looking for buyers and sellers.

If you are the former, come in Saturdays and Sundays from 1-4. If you would like to be one of the latter and help staff the shop, please call Charen McFarland at 693-0064. One way or another, we look forward to seeing you.

Ruth McFarland, Manager

MEMBERSHIP DRIVE

Membership Chairman Phyllis Pearce reports that we have added 45 new members to our roster. We need to do better, however, if we expect to reach 1,000 in a year. Remember, if each of us brings in one new member, we'll meet our goal. Members receive the bi-monthly GAZETTE, invitations to exhibit openings, and the opportunity to make a real contribution to the community through the Museum and other activities of the Whittier Historical Society. Our current membership is 519.

THANKS FOR TAKING YOUR ALUMINUM, PAPERS AND BOTTLES TO THE LIONS BIN (Mar Vista & Whittier Blvd) ON SATURDAYS FROM 9-12. THE SOCIETY GETS CREDIT.

ACQUISITION

We recently received from the Doris Jordan Estate about 100 cubic feet of artifacts among which is a very good collection of cobalt blue glass. Some very rare and beautiful pieces from this collection will be used to create a sample table setting in the TURN-OF-THE-CENTURY CUT GLASS AND CLOTHING EXHIBIT opening July 2. If you are a lover of cobalt or of all things beautiful, plan to come to the exhibit reception for members on Thursday, July 14 at 7:30 p.m.

APPLICATION FOR MEMBERSHIP IN THE WHITTIER HISTORICAL SOCIETY

NAME _____ Date _____

(Include Spouse's Name)

Address (Street) _____ Telephone _____

City _____ State _____ Zip _____

Enclosed is my check payable to the Whittier Historical Society in the amount of \$ _____ for a(n) _____ membership.

State type of membership. (See next page for categories and fees.)

Mail check and application form to: Whittier Historical Society, P. O. Box 561, Whittier CA 90608.

WHITTIER HISTORICAL SOCIETY OFFICERS

President
Myron Claxton
First Vice President
Virginia Boles
Second Vice President
Roger Wolcott
Recording Secretary
Barry Kerns
Corresponding Secretary
Ray O'Connor
Treasurer
Evelyn Larkins

Whittier Historical Society offices at

WHITTIER MUSEUM
6755 Newlin Ave.
Whittier, CA 90601
(213) 945-3871

Office Hours
Tuesday - Friday 10 a.m. - 4 p.m.
Joe DaRold, Museum Director

The Whittier Historical Society invites all persons interested in the history and future of Whittier to become members of the Society. Membership year begins the date dues are paid.

STUDENT \$5
INDIVIDUAL \$10 FAMILY \$15
SUSTAINING \$50 SUPPORTING \$100
GRANTOR \$250 BENEFACTOR \$500
SPONSOR \$1000 LIFE MEMBERSHIP \$2500

Corporate memberships are also solicited and begin with \$50 for a Sustaining membership. Other categories are as above.

Whittier Gazette is the official publication of the Whittier Historical Society.

Editor: Virginia Mathony 945-3871
Editorial Assistant: Phil Wintner
Photographer: Owen A. Lampman
Send or deliver copy for **Gazette** to Whittier Museum.

Whittier Historical Society

P.O. Box 561

Whittier, California 90608

NON-PROFIT ORG.
U.S. POSTAGE
PAID
Whittier, CA
Permit 202

SOCIETY GENERAL MEETING
JUNE 5 - 3 P.M.
EXHIBIT HOURS DURING
JULY: 1-4 on Thursday,
Saturday & Sunday.
10-4 on Friday

DATED MATERIAL

M/M Kenneth Foltz
14624 Millou Lane
Whittier CA 90602

12