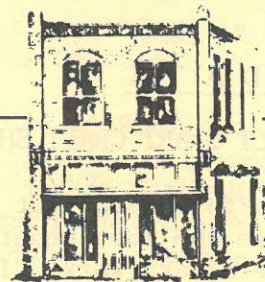


# The WHITTIER GAZETTE



WHITTIER, CALIFORNIA

---

THE NEWSLETTER OF THE WHITTIER HISTORICAL SOCIETY

---

J U N E 1 9 8 2

---

## WELCOME MISSION COURT

The old Standard Oil building on Bright and Penn St. is being restored into a complex including offices, restaurant and retail space. Upon completion, Mission Court will have the same charm as El Paseo in Santa Barbara or the mixed-use courtyards of Carmel according to Charles Hall Page & Associates, Inc., who are the new owners of the complex.

You will all have an opportunity to see this transformation on Friday, July 9, when the Whittier Historical Society will host a wine-tasting party from 7-10 p.m. Proceeds will go to the Whittier Museum.

Built in 1914 as headquarters of the Producing Department for Standard Oil Company of California, the complex is one of the oldest remaining office buildings in Whittier. The structure is arranged around a central courtyard reflecting the informal quality of the Mission Style, which was characteristic of the romanticization of the Mexican era in California history symboliz-

ing California past, present and future. Architects were Alfred W. Rea and Charles W. Garstang of Los Angeles.

The courtyard, paved in brick, was once used to park cars of dignitaries. On July 9, the courtyard will be the scene of the Mission Court Fiesta. Each attendee will receive a souvenir of the occasion. St. Hilary's Folklórico de Victoria Maria will entertain during the evening.

The complex was sold to Whittier College in 1942 and became a dormitory with office space for a bi-lingual study. It was named Newlin Hall in honor of Thomas Newlin, second President of Whittier College.

We are proud to have Mission Court become a part of the Whittier Re-development Plan. And we are pleased that Charles Hall Page & Associates have offered their lovely building to us to hold a fund-raiser and introduce it to the community.

Come and help us celebrate. We'll look for you on July 9.



## U P D A T E

### QUILT & ART CRAFT SHOW, APR. 16

It's fortunate that no one had to choose the most beautiful quilt or piece of art work. It would have been impossible - all were so beautiful. Quilts of all ages and sizes from very old to fairly new were displayed on everything from diaper bars to doors to display boards borrowed from City Hall. Each told a story radiating warmth and love.

Snuggled between the quilts we found Claire Irving demonstrating hooking on a wall hanging, Sally Coppock doing some weaving, and Mary Ann Rummel was selling book worms.

Other art work displayed included crocheted and embroidered doilies of all sizes and shapes, afghans, pictures, and a loveable mouse.

Guests were lured into the dining area to sample cookies, muffins,

finger sandwiches and other goodies that were works of art while they visited with friends.

It was truly a "show-off" day; one with lots of sharing of talents and work for Virginia Boles and her many willing helpers. All in all, it was a successful fund-raiser and a happy day for the over 100 visitors. No doubt the happiest person was Wilma Benson who had the lucky ticket which gave her ownership to a very lovely quilt.

Virginia Boles says: "A GREAT BIG THANK YOU TO ALL WHO HELPED. YOU WERE APPRECIATED."

### GENERAL MEETING HELD MAY 2

It's great to have the upstairs gallery at the Museum open for our general meetings.

On May 2, members and friends enjoyed viewing the pictures and exhibits recently displayed while they awaited the meeting to begin.

Oliver Vickery arrived in his



Standing, Sally Coppock, Harold Hall, Viola Hall, Jean Arbuckle, Audrey McDaniels, Marie Green. front Mary Ann Rummel, Virginia Boles, Sylvia Foltz, Lois Joyce, Virginia Mathony



Civil War Union general's uniform. He is a delightful speaker and recounted the work of General Phineas Banning in the San Pedro area with lots of humor and charm. All agreed we'd love to hear more of his stories.

### FOUNDERS' DAY WELL ATTENDED

It was a lively crowd that gathered to celebrate the 95th Founders' Day. Many of the ladies and men were dressed in old-fashioned clothes which added to the day's fun. John Seitz, president of the group, kept the program moving. One of the high lights was honoring the seven ladies who had passed their 90th birthday.

"I just keep breathing," said Mae McGregor, 94; Jennie Weeden, 96, believed in moderation in everything; Lillian Comstock, 91, has been in Whittier since 1910; Laura Courtney 90, was born in Whittier in 1892. She still drives her own car and "just keeps on going." Mary Johns, 90, has been driving since 1914, so "driving is not a novelty to me." Jane Niemeyer, 91, came from Missouri when she was 11 years old. Helen Neushutz (better known as Helen Newshoes) is 91. When she first came to Whittier in 1911 she lived with her cousin. One day she took the dishpan outside to empty the water. As she threw the water toward a tree, she saw something move. It was Walter Cammack.

The speeches made by Charlie Cooper and Charlie Perkins also were highlights. They related some very interesting happenings during their "growing-up" years in Whittier. We

will hear about these things in a later issue of the Gazette.

Prizes were awarded to Virginia Boles who wore a bathing suit - the envy of any "flapper" and to Leona Myer for her finery and feathers; and to Mary Fae and Seth Pickering for the best couple in costume.

President Seitz appointed Virginia Boles, chairman, with Ed Perry and Mel Rich members of a committee to investigate what part Founders should play in the Whittier Centennial in 1887.

---

### ASSOCIATED MINI CONFERENCE

The Associated Historical Societies of L. A. County met at the Nelles School on May 15. The business meeting was conducted by Ann Wiedel president of AHSLAC. George E. Matthews, supervisor Academic Instruction, Nelles School, gave a very interesting history of the school.

The group visited the Nelles Museum and saw many interesting documents and pictures there. Lunch was a delicious chicken barbecue prepared by the Los Pobladores 200 (descendants of the founding families of Los Angeles). Martin Cole, former curator at the Pico Mansion and author of several books, spoke on "Pio Pico and his Times."

During lunch we were entertained by Manuel Espinoza and his musicians. Folklorico dancers entertained until time to leave for the house tours in Whittier.



## KNOW YOUR BOARD MEMBERS

### SYLVIA FOLTZ, PRESIDENT

Sylvia is serving the Whittier Historical Society as president for the second year. This is no easy task during our organizational period at the museum.

Her previous experience in club work, as well as helping to run a business and being a homemaker, has kept her busy at home, in the office and in the community.

Sylvia is part owner of a family business - Groen, Inc., which is a wholesale florist that she and her husband, Ken, operate. This has been in the Groen family for several generations. They have expanded the business to include plants, and Ken has added the Bird of Paradise division to his management chores.

Sylvia organized the National Charity League, Inc., branch in Whittier and served as its first president. She is an honorary member now. She is an active member of the East Whittier Woman's Improvement Club, a member of PEO Chapter B J, and an associate member of the Assistance League. She organized a chapter of California Women in Agriculture here in Whittier and became its first president.

Sylvia came to the Whittier Historical Society Board as Chairman of the Bylaws Committee and moved on to Vice President and then on to the presidency.

Sylvia and Ken have two children - both grown - Lorie and Jeff. Jeff lives out of the Whittier area and is an oral surgeon.

Lorie's yard joins the Foltz's yard which makes it handy for the two grandchildren to run in and out.

We plan to highlight the Board Members each month and have started with Sylvia & Claire.

### CLAIRE RADFORD, CLOTHING CHAIRMAN

Claire was first elected to the WHS Board of Directors in 1975 as Corresponding Secretary and served for 6 years in other areas such as Chairman of Artifacts and Accessioning. This year she has been appointed Clothing Chairman.

She has been an elementary school teacher, a girl scout leader, a 4-H club leader and has presented local history slide shows to students of area schools.

Claire and her late husband, Phil, had a fine collection of antiques and intended to go into the antique business. She has been very generous with her collection of period clothing and has moderated several fashion shows in the area.

Her many accomplishments qualified her to receive the Las Distinguidas



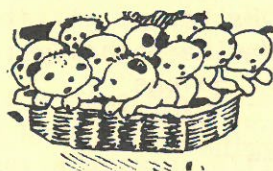
Award from the AAUW in 1975, and other awards such as "Citizen of the Year" from both the La Puente Valley Woman's Club and the La Puente Valley Historical Society. She had served both groups as President.

Claire helped organize the Docent Program at the Pico Mansion. She had been involved in a Restoration and Docent Program at the Rowland House in La Puente for several years and her expertise was valuable. The WHS Oral History Program was developed with the assistance of Claire who had already taped several early settlers. Clair has served as Docent and Curator at the Pico Mansion for the past 9 years.

Claire is a past president of the Associated Historical Societies of L. A. County and is very active in the Conference of California Historical Societies. She was a member of the Whittier Heritage Association.

Claire was co-author of Founders and Friends; has researched and written several papers and booklets including a book, The Local History of La Puente.

Her two daughters, Phyllis and Janice, live out of state so Claire does much traveling to visit them and her grandchildren. She often brings one of her grandchildren home with her for the summer.



#### SPEAKERS' BUREAU ORGANIZED

The Whittier Historical Society has found need for a Speakers' Bureau, so one is being organized. If you would like to be a member of this group, or if you know of an organization that would like someone to speak about the Museum, History of Whittier, or related subjects, please contact Virginia Mathony at the Museum on Tuesdays (945-3871) or at home evenings (693-1194).



Two of the beautiful quilts shown at the Quilt Show



## THE PRESIDENT'S CORNER

Every museum has a special category of membership for those individuals and businesses who are interested in lending an "extra helping hand" with financial support.

Here at the Whittier Museum this type of membership is available through our Associate groups. Special events will be planned in the future for these members and special discounts will be available for museum activities. The Whittier Museum, like all museums, will appreciate the encouragement and extra financial help for museum development from such benefactors. Contact the museum office for further information.

The Associated Historical Societies of L.A. County (AHSLAC) of which we are members, highlighted Whittier and its history on Saturday, May 15. Members of the Society met at the Fred C. Nelles School for a morning business session, speakers and barbecue. This was followed by a visit to the Bailey House, the Pio Pico mansion, and the historic homes of Mr. & Mrs. Arnold Collins and Mr. & Mrs. Barry Kerns. It was a lovely informative day thanks to the planning of our own Claire Radford who is Regional Vice President of AHSLAC.

Don't forget to mark July 9, 1982, on your calendar for an opportunity to see the renovated Standard Oil Bldg. (Details are elsewhere in this bulletin.)

Sylvia Foltz

## ASSOCIATE MEMBERSHIPS

Alpha Beta  
Bewley Allen  
M/M Harvey Alverson  
Wallen & Katherine Andrews  
Earl & Jean Arbuckle  
Bank of America (H.A. Beisswenger)  
Mrs. M. C. Barmore  
Maxine S. Batson  
Dr. M. Herbert Behrens  
M/M John Bateman  
Edward J & Mary C Blanchard  
Roscoe I & Evelyn A Bisbee  
Dr. & Mrs. Sanford Bloom  
Dr. & Mrs John C. Brennan  
Dr. & Mrs. Allan K. Briney  
John Brown, Jr.  
Mr. & Mrs. Paul Burkhalter  
Alice Butcher  
R. C. Chapman (Great Western Co.)  
J. Robert & Olive Clift  
Clyde & Patrice Clevenger  
M/M Donald Cole  
M/M William R. Craig  
M/M Francis H. Coover  
Dr. & Mrs. W. B. Cullis  
Dr. & Mrs. Dean C. Denman  
M/M D. C. Essley  
M/M Bruce A. Everett  
M/M Lambert W. Ferguson  
Dr. & Mrs R. B. Fink  
Ken & Sylvia Foltz  
Carl & Eleanor Fricke, Jr.  
M/M Varlie Gordon  
Adelina Halter  
M/M David A Hasle  
M/M Julian Hathaway  
Richard & Nadine Hathaway  
M/M Louis A. Havens  
M/M Edward C. Haworth  
Mary R. Higgins

Continued



## TIME MARCHES ON!

# What a difference 100 years makes.

THE YEAR IS 1912.

Whittier's achievements were "summed up in a series of excellencies that would make proud the heart of any fond mother state" wrote Lannie Haynes Martin in an article printed in OUT WEST MAGAZINE, April 1912.

"In industry, in the accumulation of wealth, in maintaining a high standard of citizenship, in growth and in self-government, few of California's children can point to such achievements, and a few of them so richly dowered with an inheritance of soil, scenery and climate," continued the article.

In 1891 Whittier had less than 600 inhabitants, there were no sidewalks, no paved streets or electric lights. There were scarcely fifty orange trees. By 1912 the population had grown to almost 6,000; there were 18 miles of paved streets, and 24 miles of sidewalks, most of which were bordered with ornamental shade trees and green parkings.

By 1912 Whittier had a municipal water system which would serve as a model for any community. Besides netting the city a profit of \$10,000 the past year, it gave the citizens the cheapest water rate of any city in the state, and electricity was 9 cents per k.w.h.

"Citrus groves were no longer reckoned by the number of trees, but by the hundred acres...about 4,000 acres. The largest lemon grove in the world was on Leffingwell Ranch...500 acres. Another natural asset was oil and 1,500,000 barrels of excellent oil were produced in 1911," continued Mr. Martin.

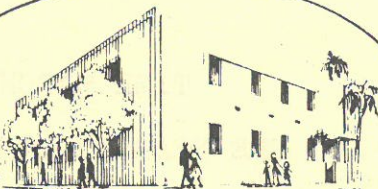
Whittier had the unique distinction of being the largest walnut growing district in the world; extensive vegetable growing...especially tomatoes. Each crate was proudly labeled "Fancy Whittier Foothill Tomatoes."

"Whittier has good schools, churches, beautiful homes, four substantial banks, and 25 grocery stores," bragged Martin. "But there is one thing Whittier hasn't got. In the entire town there is no saloon and what is more, there are not going to be any," firmly stated the article.

It's time now to be thinking of Whittier's Centennial in 1987. It will be here in five short years. Twenty some years made a big difference... What a greater difference 100 years will make. What will the Whittier Historical Society do to celebrate?



# Whittier Museum



Telephone (213) 945-3871

"Passage to the Past....Doorway to the Future"

HELLO!

Since the last issue we have been moving slowly but surely. All members of the Building Committee are learning that it takes a great deal of time to translate our ideas and concepts into usable blueprints to build with. The Building Committee has been diligently working on the five-year development Master Plan with our architect David Pichard. Once the Master Plan is completed and approved, we will know which areas are to be developed first, and we will have better utilization of our Museum "Buffs." Earl Myer has accepted the position of coordinator of the Buffs once we start building within the museum which should be near the end of June or the first week of July, depending on how quick the blueprints are approved by the City Building Department.

Building the museum is a long and costly process. We need all the skilled and semi-skilled workers we can get on a volunteer basis - one or more days a week, or one day a month. Work will be supervised by our contractor or by Maurice Joyce who has agreed to be our assistant contractor. Maury has built several homes and did much of the restoration on the Bailey house. He also has a background in teaching general high school shop classes.

I am pleased to announce that Mary Ann Rummel has been evicted from her rocking chair, has completed her R & R, and has donned a new hat as Museum Archivist. She has been hired on a part-time basis and is now coordinating the establishment of our catalogue system for our collections. Many fine artifacts are still arriving, many of which are late 19th century and early 20th Century clothing. We are pleased that Claire Radford will be our clothing chairman.

Among the other recent gifts we received is the precinct book for the 1888 election which we think is the first general election held in Whittier.

The museum staff is starting a list of people that we should interview on the history of Whittier. If you know of anyone that should be put on this list, please let us know by calling the Museum. This list will

6755 Newlin Ave., Whittier, California 90601 Telephone (213) 945-3871



be extremely important for our continual research into our past history.

Also, I would appreciate it if all of you who are making your summer sojourns across our country, or in other parts of the world and happen to wander into a museum, please pick up a brochure on that museum so that we can have a sample to work with when we formulate our brochures.

Thank you all for the excellent cooperation that you have given to the Museum.

Owen

### OWEN'S WISH LIST

Pails	Feed bag	Bicycle
Ice box	Horse Tack	Tricycle
Mirrors	Milk cans	Brownie box
Rocker	Milk Stool	camera
Bottles	Extractor	Phonograph -
Churn	Wax Knives	cylinder
Smoker	Incubator	Food grinder
Frames	Water pump	Coffee grinder
Toys	Bread box	Grist mill
Stereo camera	Baskets, peck	
Dictionary	& bushel	
Tree felling saw	Sheep & cow gear	
Carpenter tools	Horse grooming	
Egg candler	tools	
Hurricane Lamp	Block & tackle	
Chaps, Spurs	Surveyor's	
Seed spreader	equipment	
chest type	Locks, padlock	
Goat or pony	or door	
cart	Door knocker or	
Small animal	ringer	
traps	Iron mailbox	
Hay hook	flat	

Bee equipment	Light fixtures
Forge & bellows	Outside knife
Doorknobs	switch
Porcelain faucet handles	
Coal bucket - skuttle	
Stove - coal, oil, or other	
Clothes drying rack	
Clothes, adult & boy's & girl's	
Iron and iron stone	
Oval convex frames	
Portable writing desk	
Bowl and Pitcher	
Indian or Mexican life re Whittier	
Nixon mementos	
Oil Industry articles	
Wall thermometer	
Fireman's equipment	
Hoosier cabinet	
Rug beater	Porch swing
Mason jars	Apple peeler
Buggy seat	Can sealer

Copper tub	Wash tubs
Wash board	Picture frames
Eye glasses	Hat stand
Bowl & pitcher	Cracker tins
Cookie tins	Sideboard
Overstuffed	Player piano
chair	Barber pole
Water pump	Sewing equipment
Periodicals	Foot stool
Mantle clock	Hay fork

Please call one of the following if you have or know of any of the above artifacts.

Owen Lampman	693-4751
Claire Radford	691-0468
Pat Scheifly	696-8282
Museum Office	945-3871



## THE LEGEND OF CHARTER OAK

By Claire Radford

Midway between San Bernardino and the San Gabriel Mission were water holes or ponds, known by the Spanish and Mexican settlers as "cienegas." These cienegas were in the eastern end of the San Gabriel Valley and fed by winter rains and artesian wells. It was during the war between Mexico and the United States that part of this area received the name of Charter Oak.

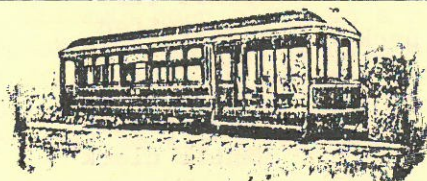
According to legend, American troopers were constantly harassed by the Mexicans, especially by one named Don Antonio. He resolved to leave California and return to Mexico, especially as a price had been put upon his head. He was entrusted with official documents and valuables to deliver to Mexico City--and so he set out on a rainy day along this road known as the San Bernardino Road, expecting to camp for the night at the San Dimas Cienegas.

He and his party stayed too long at the San Gabriel Mission, so night-fall found them only 25 miles from Los Angeles. They camped with some friendly Indians under some beautiful oaks. Fearing attack by the Americans, they buried their documents and valuables near a large oak tree, reasoning that its size would serve as a landmark.

Eager to capture Don Antonio, the Americans did start in pursuit and came upon the party under the oaks. The cavalcade was scattered and Don Antonio escaped by climbing the large oak tree. Next day he was almost captured again, but this time he was hidden under a blanket by an Indian. The Americans could learn nothing from the Indians, so they gave up the chase and returned to Los Angeles.

Two days later Don Antonio also returned to Los Angeles, alone and in rags. And no one has ever found the documents and valuables that were hidden near the Charter Oak.

THE LOS  
ANGELES  
PACIFIC  
RAILROAD



The Delightful Scenic Route to  
*Santa Monica*  
And Hollywood

Fine, Comfortable Observation Cars—  
Free from Smoke

Cars leave Fourth street and Broadway, Los Angeles, for Santa Monica via Sixteenth street, every 15 minutes from 6:35 a.m. to 9:35 p.m., then each hour till 11:35; or via Bellevue Ave., for Colegrove and Sherman, every hour from 6:15 a.m. to 11:15 p.m. Cars leave Ocean Park, Santa Monica, for Los Angeles, at 5:45, 6:10 and 6:35 a.m. and every half hour from 6:55 a.m. till 8:25 p.m., and at 9:25, 10:25 and 11:05 p.m.

Cars leave Los Angeles for Santa Monica via Hollywood and Sherman via Bellevue Ave., every hour from 6:45 a.m. to 6:45 p.m., and to Hollywood and Sherman only every hour thereafter to 11:45 p.m.

\* For complete time-table and particulars call at office of company.  
Single Round Trip, 50c. 10-Trip Tickets, \$2.00.

316-322 WEST FOURTH STREET, LOS ANGELES  
TROLLEY PARTIES BY DAY OR NIGHT A SPECIALTY



---

## Workshop

Every Tuesday morning from 11-12 noon, there will be a training time for volunteer docents. These sessions will continue through June.

The first two kinds of jobs the docents will be asked to do are:

1. To learn about those items which are on display in the upper gallery so they may greet and guide visitors on Saturdays and,
2. To learn how to go about helping with the inventory of artifacts.

The docent group has had its first meeting and everyone is anxious to get to work. You are more than welcome to join us. Just come on over. There will be some kind of work for docents to do every day the building is open.

---

## Meeting

A meeting has been arranged with John Elliott, historian for the Scientific Research Surveys of Santa Ana, for June 30 at 7:30 pm in the Gallery at the Museum.

"Archaeological Digs and Their Importance" is a slide presentation by Mr. Elliott of digs he has supervised in this area.

Preparations are underway for a dig on the Pio Pico grounds this fall and Mr. Elliott will explain how this will be done and what he hopes to find.



CLAIRE IRVING WITH HER  
NEEDLEWORK PROJECT

---

## Calendar

---

June 1, 8, 15, 22, 29 - Docent  
Workshop 11-12 noon.

June 8, Executive Board

June 17, Board of Directors 4 p.m.

June 30, Meeting with John Elliott

"Archaeological Digs and  
Their Findings." 7:30 pm

July 9, Mission Court Fiesta 7-10

July 10 & 11, Uptown Village Fiesta

July 13, Executive Board Meeting

July 15, Board of Directors - 4 p.m.

July 30, Deadline for copy for next  
issue of the Gazette.



## BAILEY HOUSE ADDITION

Through the efforts of Adele Nederburgh and the generosity of John McGregor, rosarian at the Huntington Botanical Gardens, a new rose bush has been planted in the garden of the Bailey House.

The rose is Mme. Caroline Testout, a descendant of Le France. You'll want to stop by and see these lovely blooms.

The Nederburghs take great pleasure in caring for the grounds at the Bailey House and their efforts are very much appreciated.

## YOU'RE INVITED TO MISSION COURT FOR A FIESTA

You are invited to attend the MISSION COURT FIESTA at the old Standard Oil Building at Penn and Bright Streets in Whittier on Friday, July 9, from 7-10 pm.

This is a fund-raiser for the Whittier Museum as well as an opportunity to introduce MISSION COURT to you.

A donation of \$15 for each person will hold a reservation for you.

Send your check to:

Whittier Historical Society  
P. O. Box 561, Whittier 90608

## Associates, continued.

Hillman, Biddison & Loevenguth  
M/M William Jenkins  
Roy Johnson Co., Inc.  
M/M Mervin Johnson  
M/M Robert Kennedy  
M/M Wesley R. Kewish  
Ethel W. King  
M/M Raymond Kittle  
M/M James Kline  
M/M C. T. Kolb  
M/M O. B. Lampman  
M/M Harley Latson  
Elinora Laughlin  
M/M Victor Lopez  
Earl & Barbara Maple  
Dr. & Mrs Theodore Marshburn  
M/M W. Milhouse  
Jean B. Miller  
M/M Don Moore  
M/M Earl B. Myer  
G. B. & Nancy Owen  
National Charity League  
Bonnie Newsome  
M/M Orin Nowlin  
Alice Nutt  
J. Edward & Helen Perry  
M/M Hubert C. Perry  
Harold & June Rahn  
M/M Carl L. Randolph  
Mrs. Laura Akley Robinson  
Dr. & Mrs. Robert Sack  
Elizabeth E. Saunders  
Blanche K. Seppi  
Mona R. Seppi  
M/M Stan Seright  
M/M E. L. Shannon, Jr.  
M/M James C. Smith  
Mrs. H. C. Smith  
Dr. & Mrs. William Sprague  
M/M Robert Stambaugh

Continued

Continued



# Associates, continued

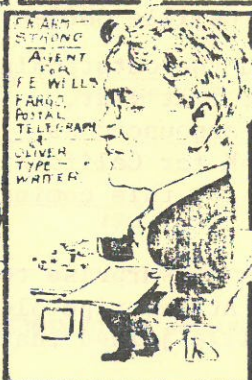
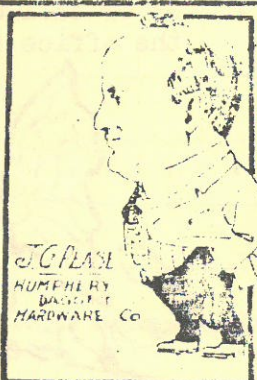
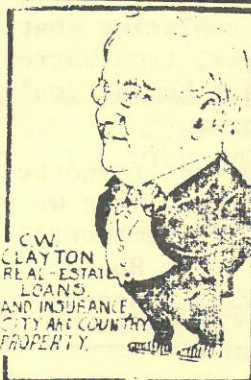
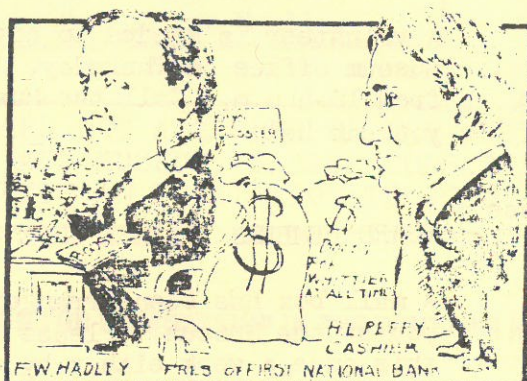
M/M Harward A. Stearns  
M/M Robert Stockmar  
Corrine Stoody  
Virginia Stoody  
Geraldine M. Thornburgh  
Dr/M Alan W. Trorey  
Neva B. Turner  
Shigeru & Chiyeko Wakabayashi  
Whittier District Board of Realtors  
M/M Robert Woehrmann  
M/M Walter J. Wood  
M/M Leland S. Woodward  
Mrs. Ruth Wudel  
M/M George Sattler  
M/M Robert L. Anderson  
Dr/M Joseph Leboritz

## WHITTIER VILLAGE FESTIVAL

July 10 and 11 are the days Uptown will be celebrating the second anniversary of Whittier Village.

The Whittier Historical Society will have a booth and will be selling pop corn and lemonade.

Virginia Boles is chairman of this activity and will be needing help in manning the booth. If you can sign-up for a two-hour (or more) period one or two days, she will appreciate it. Call 691-4227 if you can help.



Pen Sketches from Life of Some of Whittier's Live Wires



## Etcetera

ANOTHER LANDMARK GONE. A recent Letter to the Editor in the Daily News is worth repeating.

"Some people come to love a house, though it's not their own. We passed it each and every day on our path to home.

"It was a sentinel you see, from another time, keeping watch o'er you and me, sturdy, straight and fine.

"Its windows blazing friendly light, on a cold and rainy night, telling us as we caught sight, everything in town's all right.

"A shopping center replacing what once was open ranges, from barren land to filled tract homes, you've seen the many changes.

"You may be gone but not forgotten from the days gone by. When we pass this corner you'll be remembered with a sigh - the Burke House.  
Shirley Hansen

### CONGRATULATIONS TO Camille Goulet.

After being awarded the outstanding Lt. Gov. trophy for last year, Camille Goulet was announced as Governor of Circle K for California, Nevada, and Hawaii for this coming year.

This should come as no surprise to the Pico Docents. At the ripe old age of twelve, Camille joined that

group and for the next six years did tours and sundry other jobs as the need arose - logging in enough hours to place her among the top three volunteers from that group. She is still sorely missed.

Camille is in her second year at UC Berkeley in a pre-law tract. Besides her extensive travels around the U.S. related to her work with these young Kiwanians, she is still active in theater and dancing as she was here in Whittier. Mr. & Mrs. Robert Goulet of Whittier can certainly be proud of their young lady.

### VOLUNTEER OPPORTUNITIES

A volunteer is needed to cover the Museum office on Thursday, June 17 from 10-4 p.m. Call the Museum if you can help.

### BOARD MEMBERS, PLEASE NOTE

A mail box has been arranged for you at the Museum. Please check this once a week either by coming in or calling when someone is in the office (Mon.-Thur. 10-4:30).

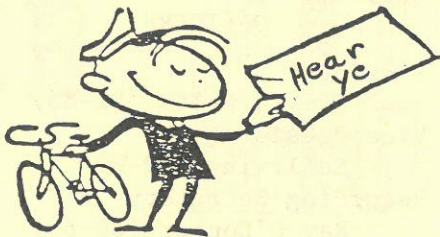




## DOCENTS - YOU ARE NEEDED

One of the most important parts of a Museum is the Docent Program. These are the volunteers who greet the visitors, explain the exhibits, operate the gift shop, work in the office, log in artifacts, accession artifacts, and many, many more very interesting things. The nice part about it is that you don't need to be experienced in any of these areas. You will be trained on the job. And you may choose the hours you will work. Did you ever have a better job offer? If interested, call the museum.

Our sympathy is extended to Mrs. Neslin on the death of her husband, Dr. George Neslin.



R E D D O T I S S U E

Please check the mailing label on this copy of the Gazette.  
If there is a RED DOT, we do not have your renewal check.  
If you want to continue your membership, and we hope you do, please complete the membership application below and mail it today.

IF YOU ARE NOT A MEMBER OF THE WHITTIER HISTORICAL SOCIETY AND MUSEUM, PLEASE CONSIDER THIS COPY OF THE GAZETTE AN INVITATION TO JOIN.

## APPLICATION FOR MEMBERSHIP IN THE WHITTIER HISTORICAL SOCIETY

(See over for dues)

Membership year begins with receipt of dues and is for one year.

Name \_\_\_\_\_ Date \_\_\_\_\_  
(Spouse's first name)

Address \_\_\_\_\_ Phone \_\_\_\_\_  
(Street)

\_\_\_\_\_  
(City) (State) (Zip)

Enclosed is check payable to **Whittier Historical Society** in the amount of \_\_\_\_\_

for \_\_\_\_\_  
(Type of membership)

Mail to: WHITTIER HISTORICAL SOCIETY  
P.O. Box 561  
Whittier, CA 90608



WHITTIER HISTORICAL SOCIETY  
OFFICERS

President

Sylvia Foltz (82-85)

Vice President

Ed Irving (82-85)

Recording Secretary

Ray O'Connor (80-83)

Corresponding Secretary

Barry Kerns (82-85)

Treasurer

Fred Bewley

Whittier Historical Society  
offices at

WHITTIER MUSEUM  
6755 Newlin Ave  
Whittier, CA 90601  
(213) 945-3871

Owen A. Lampman, Director

The Whittier Historical Society  
invites all persons interested in  
the history and future of Whittier  
to become members of the Society.

Membership year begins the date  
dues are paid. Student \$5;  
Individual \$10; Family \$15;  
Sustaining \$50; Supporting \$ 100;  
Grantor \$ 250; Benefactor \$ 500;  
Sponsor \$1000; Life Mbrshp \$2500.

Corporate memberships are also  
solicited and begin with \$50 for a  
Sustaining membership. Other  
categories are as above.

Whittier Gazette is the official  
publication of the Whittier  
Historical Society.

Editor: Virginia Mathony, 693-1194  
Ass't Ed: Marilyn Jensen, 943-9627

Send or deliver copy for Gazette to  
Whittier Museum, 6755 Newlin Avenue.

## Whittier Historical Society

P.O. Box 561

Whittier, California 90608

Bulk Rate  
U. S. Postage  
PAID  
Permit No. 202  
Whittier, CA

NON-PROFIT ORG.

JULY 9  
MISSION COURT FIESTA

JULY 10, 11  
UPTOWN VILLAGE  
FESTIVAL

RED DOT ISSUE

Mrs Anna Benson  
6319-A S Comstock Ave  
Whittier CA 90601