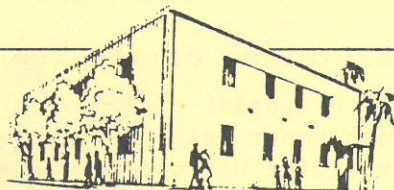


The WHITTIER GAZETTE



WHITTIER, CALIFORNIA

THE NEWSLETTER OF THE WHITTIER HISTORICAL SOCIETY

Vol. IX

APRIL 1983

No. 1

SOCIETY YEAR CLOSES WITH HIGH MARKS

If report cards were in order, President Sylvia Foltz and the Board of Directors of the Whittier Historical Society would receive "A's." This past year has shown many tangible accomplishments. Sylvia's Annual report is in this issue of the GAZETTE and you will be amazed when you read it.

Most of you have seen what has been done since the door of the Museum opened in January, 1983, and an interim Director, a Contractor, and many Volunteers moved into the building.

Open House

The Museum became alive on February 24 when an Open House was held to honor those who made the Museum happen.

Three hundred people attended and enjoyed the Museum exhibits, the Wayne Long Exhibit, the buffet and the entertainment.

The Committee included Eleanor Fricke, Lillian Snodgrass, Barbara Johnson, Jan Maples, Virginia Trorey, Phyllis Speek, Sharon Uzell, Marge Grandy and Francine Rippy. My sincere thanks to each of you for a job well done.

Thanks also to Sylvia Foltz for furnishing

most of the flowers; to Paul Schirmer for donating two hot dishes for the buffet; to Marilee Von Ottman and her friends for serving the wine which was donated by the Shannons; to Viola Hall and Lucille Fields for making and serving the punch; to Norton Burt for the use of the piano; to Joan Riddle and the Cal Hi Madrigals; to Michael Doran, guitarist; to the members of the Society who served as Docents; and to the Society Board members who brought hors d'oeuvres. It was a grand evening and the Museum received approval from everyone.

Ruth Shannon, Chairman

Annual Meeting

At the Annual Dinner, March 16, we tied together one phase of the Board's planning; we gave public recognition to many deserving persons and wished success to the new leaders who will carry on in the great tradition established by

many diligent workers in the past.

Historian of the Year

Historian of the Year is the highest honor paid to a member of the Whittier Historical Society. This year the award went to NADINE WOOD.

When many people talked about having a museum in Whittier, Nadine was the first one to do something about it. Her dedication and perseverance resulted in the establishment of the Whittier Museum. She would be the first to acknowledge the many contributions made by so many others, but for her singular involvement, we honored Nadine to receive the Second Annual Historian of the Year Award.

"History in the Making"

"History in the Making" was the theme of the Annual Meeting and dinner chosen by Ed Irving, chairman. He and his wife, Claire, hosted the evening's event and arranged the fine program.

Guest speaker was PATRICIA HENRY YEOMANS, a representative of the Los Angeles Olympic Committee who spoke on the history, ethics and future of the 1984 Summer Olympic Games.

New Society Year

And now we move on to the new year, the new Board of Directors, a new Director, and a new Curator.

MYRON CLAXTON is the new President of the Whittier Historical Society. He has been a member since the Society's founding. Former educator and adminis-

trator with the Whittier Union High School District, and now Whittier City Mayor Pro-tem, Myron will pick up the reins and lead us into the next phase of our planning.

"The chief goal," he says, "is to have the Museum in full operation by the end of this 1983-84 year." He also commended Sylvia Foltz for her dedication during the past two years she served as president and for her accomplishments in getting the Museum underway.

JOE Da ROLD is the new Director of the Whittier Museum. No stranger to the Whittier area, Joe has lived here for nine years. He is a former art and exhibit coordinator for Abrazis Art Gallery in Newport Beach; was an arts writer for "Premiere Magazine of the Arts" in Orange County; director of Library Services in the City of Santa Fe Springs for six years, and a librarian at Los Angeles County Public Library for eight years. He began his duties at the Whittier Museum on March 1.

OWEN A. LAMPMAN steps into a new job of Curator. Owen has been serving as interim Director for the past year and we are grateful to him for his enthusiasm, interest, and the knowledge necessary to hold things together during our formative period. Owen will be working part time and will return to school part-time to complete his degree.

Pictures in this issue are by Owen A. Lampman

WHITTIER HISTORICAL SOCIETY BOARD OF DIRECTORS



Front row: Joan Thompson, Sue Willford, Nadine Wood, Sylvia Foltz, Roger Wolcott, Francine Rippy, Ruth McFarland, Varlie Gordon. Back: Sue Settledge, Joe Da Rold, Museum Director; Barry Kerns, Myron Claxton, President; Ray O'Connor, Mary Burkhalter, Eleanor Fricke. Not shown: Kenneth Ball, Bob Bates, Fred Bewley, Gary Collings, Ed Irving, Don Moore, Lee Owens, Phyllis Pearce, Diane Sattler, Pat Schiefly, Ruth Shannon, Mynatt Smith, Phil Wintner, Virginia Boles, Evelyn Larkins.

Looking Ahead

The Board of Directors of the Whittier Historical Society recently endorsed the Building Committee's recommendation to complete construction on Phase I as quickly as possible. As of this writing, the target is June, which would allow a month for "finishing touches" - just in time for 4th of July festivities and the annual Village Festival, July 9 and 10.

Museum Developments

The Museum will begin to expand its hours open to the public. Docents will be needed in greater numbers to help conduct more and more tours.

Fund-raising efforts will be directed toward new priorities: Children's Museum, Famous Person's Room, Lecture/Projection Room, Transportation and Education areas.

All of the aforementioned projects are important and exciting, but funds are also needed for less "colorful" projects as an elevator (to carry freight and to provide the handicapped access to the second floor.) Another critically needed area is the parking lot, which must be regraded and landscaped.

Ultimately, this entire program of development depends on our membership. Everyone can lend support right now by assisting with the current membership drive. Membership Chairperson Phyllis Pearce has challenged us to have 500 new members (1000 total) in 18 months. Let's show her we're overachievers and do it in 6 months. Each of us has only to bring in one new member. Stop by the Museum Office to pick up some extra membership applications.

On the Children's Art Exhibit:

Spearheaded by Dee Tenney, her committee has promoted the project to the area elementary schools, coordinated the scheduling, and has been putting in long hours matting, hanging, and labeling more than 300 pictures.

"OUR TOWN" will be on exhibit from April 16 to May 29. Individuals and classes are invited to view the display.

The Museum will resume weekend hours of Saturday and Sunday from 1-4 p.m. from April 15-May 29. Group tours can be arranged for other hours and days by calling the Museum at 945-3871

"Our Town" committee was made up of Jean Stockton, Melody Shubert, Lora Burri, Betty Conley, Sharon Gibson. Dee Tenney was Chairman.

On the Library:

Books on antiques and collectables are needed for our reference library to help identify donated items and to assist with researching upcoming exhibits. If you have any "coffee table" books in these areas, why not give them a new life by donating them to the Museum.

On the Queen Anne House:

A visitor looked into the small two-room house recently, and could not help but notice the unfinished floors, the unpapered walls, and the settee in need of reupholstering. After glancing at the sign that

THE WHITTIER MUSEUM

CORDIALLY INVITES YOU TO

THE OPENING OF

"OUR TOWN"

AN ART DISPLAY BY THE CHILDREN
OF THE Whittier area

OPENING NIGHT - APRIL 15, 1983

7:00 - 9:00

Refreshments will be served

mistakenly read "Queen Anne's House" he turned to the Docent and commented: "Queen Anne sure has fallen on hard times"!

The Building Committee is still actively seeking furnishings to make this the jewel it should be. The settee and chairs you've seen inside are only on loan to us, as will be a promised "Hoosier." If you have any "orphaned furniture" for Parlor or Kitchen that could use a caring, permanent home, please contact Valerie Bates at 698-5585. Still needed are: Kitchen table and chairs; Settee and side chairs, Braided Kitchen rugs; ceiling fixtures; and lamps (circa 1910), and a 38" Cook Stove; small hand water pump for the sink.



BEHIND THE SCENES

WITH OUR Museum Director

By all rights these last couple of weeks should have found the Museum relatively quiet. After all, the Contractor and the Archivist were both off on separate snowbound vacations, and the Wayne Long Exhibit was drawing to a close. But peace and quiet have been rare commodities on Newlin. A small tornado named Virginia Boles turned the barren Phase II area quite literally into a fashion showplace. Meanwhile, outside the building, God turned the parking lot into a swamp - not your ideal exhibit square for "horseless carriages." After much frustrated sweeping by Virginia and Earl Myer, the crew at Fire Station #28 came to the rescue with their pumper truck. But Saturday night brought more rain, so Earl and Virginia were out there early Sunday a.m. to sweep the lot dry. Two hundred guests enjoyed the sunny day and the festive luncheon oblivious to the turmoil of preceding days.


Kudos to Virginia for her organizational and showmanship talents, and for giving us all a memorable afternoon.

FUNDRAISING

Fundraising activities are taking many forms at the Museum these days. Board members are spearheading efforts to solicit Foundation Grants; upcoming luncheons and special events are being planned; a new membership drive is underway; and the Grants Committee is exploring areas in which to apply for Federal Grants. Building a museum is a complex and monumental task, but with everyone's

efforts it is fast becoming a reality.

Exhibit planning is high priority right now. We are striving for variety, wide appeal, and quality. Starting with the Children's Art Exhibit, future exhibits will be accompanied by supplemental activities, be they lectures, films, etc. Each Saturday from April 23 through May 29, the Museum will sponsor a children's art "discovery" experience from 1-3 p.m. Children from 5 - 12 years of age are welcome, at no charge, while their parents tour the exhibit. Watch for more details in the newspapers.



CLOSED MONDAYS

We have effectively eliminated "Blue Mondays" from our calendars, because the Museum is CLOSED MONDAYS, and there will be no tours on Tuesdays. Staff and volunteers are on duty Tuesday through Sunday, so Monday will be our official day of rest. Please bear with us until we get an answering machine operational to take your Monday messages. (Museum Docents will continue to meet at the Museum on the 4th Monday of each month.)



D O C E N T A C T I V I T I E S

Friends of the Bailey House

April is the month of an unusual celebration at the Bailey House. There is to be a wedding, in the garden, of one of the descendants of Jonathan and Rebecca Bailey.

Richard Joyce, son of Maurice and Lois Joyce of Whittier, is marrying Karen Davis of Covina. Richard is the great, great, grandson of Jonathan and Rebecca Bailey. His maternal grandparents George and Iva Hunnicutt were married there 87 years ago.

Also of interest are five dolls dressed in old baby clothes donated by Adele Nederburgh. Lois Joyce and Claire Radford dressed the dolls and rearranged the children's room at the Bailey House so that the old books are now more visible.

Marge Friedhof, Publicity

Pio Pico Docents

We want to invite you all to attend our Spring Arts and Crafts Festival at the Mansion grounds on Sunday, May 15.

Featured will be artisans making lace, carving wood, oil painting, and the docents will be baking bread in the horno and churning butter.

Three groups of dancers will entertain on the patio during the afternoon. The action will begin at 12 noon and continue to 3:30 p.m.

Jill Waters, Publicity

Museum Docents

The Museum Docents will be traveling to San Diego on May 2 to attend the Southern California Docent League Spring Meeting. It will be held at the San Diego Natural History Museum and all docents are invited to attend. We will be leaving from the Museum at 7:30 a.m. Transportation will be provided.

Important: If you are planning to attend, please call Diane Sattler at 947-3458 by April 15. They are planning to serve lunch at the Cafe Del Ray Moro and the deadline for reservations is April 15. The agenda for the day also includes tours of the Museum of Man, the San Diego Art Museum Sculpture Garden, and Timken Art Gallery of the Aerospace Museum.

Tours of the Whittier downstairs area of the Whittier Museum are now being given by the Docents on Saturday and Sunday afternoons.

Training sessions were held on April 4 and 11 and monthly training sessions on Whittier will be held every month for those docents unable to attend the first two sessions.

The May meeting will be held on Monday, May 23 instead of May 30 due to the Memorial Day holiday. Election of officers for the next year will be held at the April meeting so please make every effort to attend.

Diane Sattler, Chairman

GAMBLE HOUSE TOUR AND LUNCHEON

WHAT: A luncheon and a tour of the GAMBLE HOUSE

WHEN: Wednesday, April 20, 1983

WHERE: 4 Westmoreland Place, Pasadena

TIME: Lunch at 11:30 a.m.; Tour 1 p.m.

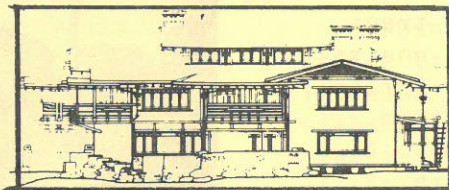
COST: \$15 each. Proceeds go to the
Queen Anne House and Barn

The Gamble House was built in 1908. It belongs to the University of Southern California. It is the most complete and best preserved example of the work of the internationally noted Pasadena architect firm of Greene and Greene. It is a United States National Historic Landmark.

NEED A RIDE? Call the Museum at 945-3871, or Virginia Boles at 691-4227.

The Gamble House driveway is in the 300 block of North Orange Grove Boulevard, between Walnut and Rosemont. (1/2 block north of Colorado Boulevard.)

If you get lost, the Gamble House telephone is 793-3334.



RESERVATION FORM

Complete, detach and mail to Virginia Boles, 1761 Woodcrest,
La Habra, CA 90631, before April 15.

NAME _____ Telephone _____

Please reserve _____ tickets @ \$15 each for the luncheon and
tour of the Gamble House on April 20. Total amount

enclosed \$ _____. Make check payable to the Whittier
Historical Society, NO TICKETS WILL BE MAILED. Check in
at door.

CHAMPAGNE BRUNCH AND FASHION SHOW

Sunday, March 6, 1983 was one of the Whittier Historical Society's finest hours. Everything (especially the weather) and everybody cooperated to made the champagne brunch-fashion-show-antique-car-display a most memorable event.

The antique cars started arriving just before noon and the fun and excitement of the afternoon was off to a good start. Thanks to Philip Reed, Charles Moody, Varlie Gordon, Manuel Valle, Robert Duren, John MacFarland, John Manifor and Wyn Harder for sharing with us a bit of the past; and thanks to the seven Explorers from the Whittier Police Department who kept an eye on the thirteen beauties and the one horse and surrey with the fringe on top.

Inside the Museum was at its best. Thanks to flowers and trees from Sylvia Foltz, table and chairs from PDQ Rentals of Santa Fe Springs. (Delivered and picked up by them.) Remember them for party needs. A beautiful modeling runway with all the trimmings loaned by Hinshaw's Department Store, lovely background music by our own member Ruth Grams, and her magical harp. A PA system loaned by General Telephone through Gene Chandler, catering by John Silvius and his great staff who turned the contractor's office into a fulfledged kitchen for a few hours.

The food was delicious, John!

Outstanding service was given by the National Charity League and the Ticktockers. A fantastic job ladies! And special thanks to Ginny Ball for getting all the help. Many thanks to Barbara Carty and all the lovely models who were so beautiful in Joy

Reed's clothes of the 1900s. Vicki Martha, Mary Ellen, Sheri and Jill. You were so perfect!

The biggest thank you of all goes to Mrs. Philip (Joy) Reed for showing her lovely collection of 1900-1910 dresses. What a beautiful job you did Joy. Thank you from everyone.

The list is endless of those to thank: Don Carty, Earl and Bobby Myer, Herb Evans, Owen Lampman, Jean Arbuckle, Claire Irving, Joe Da Rold, Betty Kaesner, Francine and Sarah Rippy and many others. Thanks to you all for your support and enthusiasm.

And thanks to everyone who participated Sunday, March 6. Wasn't it a wonderful day!



once upon a time. . .

MY EARLY DAYS IN WHITTIER

By Charles Cooper

My grandfather had a ranch on Santa Fe Springs Road about 1884. He herded and grazed cattle on property now called Whittier. Grandfather hauled the first Quakers into Whittier from Norwalk in 1887 from the Southern Pacific depot in Norwalk to Whittier. He built his home in 1887 on Philadelphia Street and Newlin Avenue where the Museum now stands. My aunt Mary started a temporary restaurant in a tent between Newlin and Pickering.

My grandfather and my father hauled groceries and other articles from Los Angeles to the grocery stores in Whittier for several years. My mother who was the daughter of a Quaker minister in Long Beach went to the Whittier Academy, which was the start of Whittier College in 1893 and was located on what is now the parking lot of the American Savings and Loan. She paid \$10 tuition fee and \$3.50 to \$4.50 a week for board and room. Walter Cammack's father was one of the trustees of the school.

At one time, the oil produced in the hills behind Whittier was run in pipe lines to Los Nietos into large oil tanks. It was transferred to tank cars and shipped all over Southern California. My father was the shipping clerk for the Murphy Oil Company and lived on the property. Sam Perkins' two sons, whom many of you know, are Charlie and Doug Perkins.

There were four adobe buildings in Los Nietos and at that time, one of those buildings was where the Perkins' kids and the Cooper's kids went to grammar school. Those buildings were built prior to 1792.

Most of the property between Whittier and Los Nietos and Pico Rivera on toward El Monte and Puente and around Covina was walnut orchards and they had what they called walnut vacation. . .the schools in the district were all let out for three or four weeks in the fall for the harvesting of the walnut crop.

When they started taking out walnut trees and planting citrus, it was a problem to get the big trees out - they did not have tractors in those days. Barnum and Bailey circus wintered in this part of the country in those years. The ranchers would rent elephants and a trainer, harness four elephants, and with a log chain pull the trees out by their roots.

The property from Magnolia to Beverly Blvd. and Norwalk Blvd. was all in vegetable gardens. They were grown by Chinese who peddled them in Whittier and other towns with a horse and wagon. To get water for irrigation for the trees and other agriculture, the farmers would get together on the river with their

turn to page 10

Once Upon A Time, cont'd.

with their horses and scrappers and build a dirt and sand dam in the spring after the rains. They would take the water in the ditches to the Rivera side that was called the Cate Ditch. On the east side of the river it was called the Los Nietos Ditch.

I remember there was a large excavation at the corner of Hadley and Magnolia. It was where the clay was mined for the making of bricks that were used in the construction of some of the buildings in Whittier. That excavation was used for a dump for a long time.

George Weinshank, a walnut grower, told me about his planting the large walnut tree on Whittier Boulevard. It was a very small tree and he planted it on the bank of a reservoir which was used to irrigate the vegetable gardens grown by the boys at Whittier State School. The inmates at that timewere kept in the school as old as twenty-one years. Besides the vegetables that were grown for the institution, they had a dairy where they produced their own milk and butter. They grew their own beef and pork and had their own bakery.

After many of the walnut orchards were taken out, they were replanted to citrus. At one time there were three large citrus packing houses on Whittier Boulevard and several more close to Whittier.

When Walter Cammack, Oscar Marshburn and I were in Whittier High School about 1910, there was only one building on the high school grounds except for a

few sheds for the students that rode horses or drove buggies to school. The barn was situated where the boys' gym now stands and the athletic field was where the auditorium now stands.

While Marshburn and I were on the high school board in the thirties, we had an earthquake that destroyed the original high school building and it had to be rebuilt and the other buildings had to be worked over and brought up to the new earthquake code.

In 1934 they had a polio epidemic that went through the country and the health department would not allow the graduating class to have its exercises in the auditorium because no large crowds were allowed to gather. We did not tell the kids about this until they met on the bleachers of the athletic field for commencement exercises practice. .all with their old clothes on. . . and we told them what had happened and handed out their diplomas. . . that sure did not go over very good. My daughter, who was in that class, reminds me every once in a while about that dirty trick.

Around 1906 the Pacific Electric put in the line to Whittier. It ran into Whittier and came up Philadelphia Street and down Greenleaf Avenue a couple of blocks. Riding the old red cars to Whittier is where I met Dick Nixon's father who was a motorman.

My grandfather told me about
turn to page 11

Once Upon A Time, cont'd

the hanging tree located about one-half mile above Beverly Boulevard on the 605 freeway, where they hung horse thieves. He told me about the forming of a posse at El Monte to get three horse thieves that were operating in the San Gabriel Valley. They located them camped in the riverbed on the river just east of Montebello. They caught one of them but the other two got away. They took the one over to the hanging tree and strung him up.

There were two men who decided that they should not start a new town like Whittier without a saloon, so they put up a tent on South Greenleaf, put up a bar, and stocked it with liquor, and prepared to open up the saloon. But the night before they were to open they were visited by a group of women and they wrecked the place. . . so no saloon in Whittier! (One of the men turned out to be my uncle, John Wertz.)

DOCENTS, DOCENTS ALL AROUND

Ten Docents (five from the Museum; five from the Bailey House) represented Whittier Historical Society at the City's recent dedication of Central Park. Docents circulated among the festive throng with membership brochures, and preliminary reports which indicated great response.

DO YOU RECOGNIZE THESE ARTIFACTS?



One is a glove last and the other is a mallet for pounding leather. Gloves were made in Montebello, CA at the turn of the century.

NATIONAL VOLUNTEER WEEK

Yes, there is a National Volunteer Week - APRIL 17-24.

The Whittier Historical Society is made up of volunteers, so which one is responsible for honoring all the others?

The best suggestion is to think about what you have done, what others have done, and what has been accomplished together. If you feel good about your part of the whole, pat yourself on the back, then, turn around and pat someone else on the back and say thanks.

Etcetera

ON MUSEUM BUFFS. In addition to working with Contractor Don Carty on construction projects, ablebodied volunteers (male or female) are needed every other month "oncall" to to help set us and take down the changing exhibits. Please call the Museum at 945-3871 if you can help.

THE BACK ROOM is graciously accepting old sheets (even colored) to use as dust throws over large artifacts that cannot be better contained.

THE LIONS RECYCLINIG CENTER at Mar Vista and Whittier Blvd., will accept aluminum cans, bottles, and glass containers (no lids, please) and newspapers. Take them in on Saturday mornings, before noon, and tell them you want credit to go to the Whittier Historical Society. Credit is in the form of money and it is most useful at the Museum.

GRANTS EXPERTISE NEEDED. The Grants Committee of the Whittier Historical Society is seeking volunteers to join the committee. Needed are those with expertise in grant writing.

Teachers, educators, or anyone with experience in Foundation funding - please contact Co-Chairs: Sylvia Foltz at 693-5751 or Sue Settlage at 699-1141.

Fundraiser

TUESDAY, MAY 17

LUNCHEON AND PROGRAM

11:30 A.M

\$5.00 ea.

Mercury Savings, 1001 Imperial
La Habra, CA

Space limited to 60 guests

Door Prizes

Send check made payable to Whittier
Historical Society to Virginia Boles,
1761 E. Woodcrest, La Habra, 90631
by May 10.

OFFICE NOTES

The Museum office continues to be open from 10-4 Tuesday through Friday. The office staff is a small but splendid group of volunteers:

Tuesday, Virginia Mathony
Wednesday, Nancy Claxton
Thursday, Betty Kaesner
Friday, Mina Lassen

Virginia doubles a GAZETTE Editor, Nancy coordinates scheduling, and Betty is also our Registrar. If you would like to substitute, call Nancy at 945-3871.

PRESIDENT'S ANNUAL REPORT 1982-1983

ASSOCIATE MEMBERS

Carty, M/M Don
Hayes, M/M V.J
Latson, Ralph
Mastian, M/M
Richard
Williams,
M/M Arthur
Whittier Lodge
#1258 BPOE
Bauer, M/M
Weide,
Dr Marion S
Hinshaw's Dept.
Store
Millerm M/M
Keith
Heard, M/M R.W
Arco Printing Co
Wright,
M/M William
Thompson,
M/M William
Smith, M/M Jack
Maple,
M/M Robert
Plute,
M/M Richard
Rahn, M/M H
Magnuson,
M/M Gordon
Newsom, M/M John
Benson, M/M Don
Hall, M/M Harold
McEachen,
M/M Robert
Smith,
M/M Myatt
Payne,
M/M Robert
Kenworthy,
M/M Harold
cont'd

What a good year it has been for solid development of the Whittier Historical Society and the Whittier Museum. In March, 1982, the Board of Directors of the Museum Foundation merged with the Whittier Historical Society Board of Directors, and with the two groups working together, plans for the development of the museum progressed and the dreams of many dedicated volunteers began to materialize. The list of Whittier citizens, former residents, business interests, grants, and friends who have made a contribution to the museum is well into the thousands. It is almost an impossible goal to give everyone the recognition that is justly deserved in this annual report. Perhaps the best method is to list the various committees and make note of the special events held during the year.

Mention should first be made of our professional staff at the museum who have all contributed far in excess of their expected duties. Bringing a semblance of order out of the beginning chaos have been Owen Lampman, Director, and Mary Ann Rummel, Archivist. The creative structures that have been built downstairs have been masterminded by Don Carty, Contractor and Bob Bates, Designer. Without their expertise, our first floor would still be an empty shell.

MUSEUM BUFFS — Earl Myer, Chairman

Special recognition needs to be given to six outstanding "buffs" who have spent countless hours working at the museum helping wherever needed. These include Earl Myer, Maurice Joyce, Len Lindstrom, Wendell Keith, Herb Behrens and Herb Evans. Many others have also contributed their professional services.

VOLUNTEER OFFICE STAFF — Virginia Mathony, Nancy Claxton Co-Chairmen

Helping Virginia and Nancy coordinate many office procedures have been Betty Kaessner, Hortense Behrens, Mina Lassin, Christine King, Jo Romick, Shirley Ward and volunteers from National Charity League. Virginia has also made an outstanding contribution to the Society as editor of the GAZETTE which is published six times yearly.

BYLAWS — Mary Burkhalter, Chairman

Thanks to Mary, the Society and the Museum has a completely revised set of bylaws. A dedicated committee met frequently this last summer to assist Mary with the writing of these documents. Changes were also made in the Articles of Incorporation.

FINANCE — Lee Owens, Chairman

The job of treasurer was efficiently shared this year by Earl Myer and Evelyn Larkins. Owen Lampman, Sr., retired CPA, developed a complete new bookkeeping system for the Society and the museum. The new set of books will be able to accomodate all increased revenue and expenditures as our museum continues fund raising campaign. It is hoped that an additional \$50,000 can be raised this year so that Phase 1 can be completed this year. Thanks to Lee, it looks very promising that this goal can be reached.

SPECIAL PROJECTS — Virginia Boles, Chairman

Virginia organized several events this year including the delightful evening at the Mission Court in July, 1982, the Society's booth at the Whittier Village Fair in the same month, our annual home tour in the fall and the Champagne Brunch and Fashion Show in early March, 1983. The museum's coffer has greatly benefited from Virginia's unlimited energy and enthusiasm.

Also, a special event was held on February 24, 1983. Ruth Shannon, executed a very successful Museum Preview Party to honor all museum donors. Friends and donors celebrated the progress of the museum with champagne and hors d'oeuvres on this gala night.

POLICY — Virginia Boles, Chairman

In addition to the fund raising activities, Virginia has also been chairman of the Policy Committee. This hard working committee has performed a great service this year by organizing a new committee structure for the Society and the museum and also by writing guidelines for committees.

AWARDS — Lambert Ferguson, Chairman

Lambert has been responsible for awards and recognition given to members and friends at the annual awards meeting in March, 1983.

PROGRAM — Ed Irving, Chairman

Four outstanding speakers were scheduled for the Society's quarterly meetings this last year. These included a slide presentation by Francis and Gladys Waddingham on Victorian Houses in California, a talk on little known facts in the life of John Greenleaf Whittier by Dr. Joe Fairbanks, and a program on the history of the Banning family by Oliver Vickery. A speaker from the Los Angeles 1984 Olympic Committee highlighted the annual meeting.

Francis Rippey, Hospitality Chairman, has been on hand at the quarterly meetings to provide refreshments and promote sociability.

BUILDING — Ed Irving, Don Carty, Co-Chairmen

This committee has been very active and has met on a regular basis to make decisions on Phase 1 development. This year will hopefully see the completion of the museum entry, museum shop, Queen Anne house, barn and oil diorama. A great deal of creativity and attention to detail of construction is apparent in the completed work, thanks to the committee and Bob Bates.

INTERIOR DESIGN, QUEEN ANNE HOUSE — Valerie Bates, Chairman

Visitors to the museum frequently state that they would like to take up residence in our charming Queen Anne house. Valerie and her committee, Ed Perry and Robert Smith, are authentically furnishing the home with donated items and items that are on long term loan to the museum.

MUSEUM SHOP — Charen McFarland, Chairman

This beautiful furnished area of the museum has promoted a lot of interest and enthusiasm. As a subcommittee of the docent group, the museum shop committee is busy acquiring a shop inventory and establishing shop policies and bookkeeping procedures.

DOCENTS — Diane Sattler, Chairman

The number of museum docents has steadily grown along with the committee's enthusiasm. Our docents have lent their assistance for tours, museum staffing and for all special events. A museum cannot function without the help of a volunteer group such as this.

EXHIBIT — Bob Halliday, Chairman

The upstairs gallery opened in November, 1982, with the magnificent ethnic art collection of Wayne Long. The gallery was filled with priceless treasures, all professionally arranged by the Long family members, including Helen and Dale Long, Pat and Scott Borison, and Diane and Robert Long. The museum is indeed indebted to the Long family for sharing this unique collection with us. This show will close on March 17, 1983, and will be replaced with a children's art show in mid April. Headed by Dee Tenney, this show will feature the theme of "Our Town."

PERSONNEL — Myron Claxton, Chairman

The goal of this committee has been to develop personnel policies and to coordinate the professional staff of the museum. The Committee successfully achieved its objectives and also engaged the services of Joe DaRold as new museum director effective March 1, 1983. Owen Lampman will remain on staff of museum curator.

KITCHEN — Lucille Fields, Lois Joyce, Viola Hall, Co-Chairmen

These capable chairmen have long awaited the installation of the kitchen facility so that they could become an active committee. This goal was accomplished by the night of the Museum Prevue in February, 1983, so a great deal of activity can be expected in the years to come in this area.

MEMBERSHIP — Phyllis Pearce, Chairman

Phyllis has managed our membership records for the last two years. Now on computer, our memberships total 480.

A new category of membership, the associate groups, was added in 1982. These groups have been under the guidance of Evelyn Stebbins and have provided extra financial support for the museum.

Other developing committees include the Library Committee headed by Kenny Ball, Artifacts Committee headed by Pat Schiefly and the Grant Committee.

Mention should also be made of Marygene Wright who planned our bus tours for the year and Ginny Ball, Chairman of our future Children's Museum. Thanks are due to Ray O'Connor for his legal counsel and secretarial duties and to Linda Chesnut for arranging for the publicity this year. Virginia Stoodly served as historian.

Additional members serving on the Board of Directors and not previously mentioned include Fred Bewley, Doug Ferguson, Eleanor Fricke, Barry Kerns, Ruth McFarland, Klane Robison, Mynatt Smith and Nadine Wood. Serving on the board as liason for the Bailey House was Jean Arbuckle, and Varlie Gordon for the Pio Pico Mansion. Both the Bailey House Docents and the Pio Pico Mansions Docents organized several affairs during the year including a fiesta, open house and an art show.

I have personally enjoyed the year as President of the Whittier Historical Society and thank all of you for giving me the privilege of serving in this capacity. I would like to thank all of the board members for assistance, but especially Don Moore, who served as Museum Chairman and coordinated the museum committees. His help and support have been invaluable.

The Board of Directors joins me in extending an appreciative regard to all of the hundreds of you, who with your encouragement and support, are making the Society and the museum an historical and educational asset for the community. It is our hope that both the Society and the museum will build a better future to all Whittier residents.

Sylvia Foltz, President 1981-1983

ASSOCIATE MEMBERS con'd.

Covington,
M/M James
Harcourt,
Dr/M Fred
Turpit,
Judge & Mrs
James

Associate
members are
those who
choose a
Sustaining,
Supporting,
Grantor,
Benefactor,
Sponsor or
Life membership
(see last page for
categories.)

FORMER WHITTIERITE WRITES

... here is our
check for a family
membership.

We share the
Gazette with
others from So.
California here at
the Meadows.

It's like a letter
from home and the
whole project of
the Museum is
thrilling.

Thanks for the
memories. R.P.P

Calendar

APRIL

16, NEW EXHIBIT "OUR TOWN" OPENS AT WHITTIER MUSEUM. RUNS THROUGH MAY 29. Viewing is Saturdays and Sundays from 1-4 p.m. Special tours can be arranged. Call 945-3871.

25, "2 ON THE TOWN" CHANNEL 2 TV. A VISIT WITH THE HATHAWAYS OF SANTA FE SPRINGS

MAY

5-8, 1983 CALIFORNIA HISTORIC PRESERVATION CONFERENCE, CHAPMAN COLLEGE, ORANGE, CA. Call 714-834-5560.

7, FOUNDERS' DAY PICNIC, CENTRAL PARK, 11:30 a.m. PACK A LUNCH, DECORATE A HAT, AND COME ON DOWN TO Central Park. Coffee and ice cream furnished. Those over 90 years of age get a free lunch. call 695-1250.

15, ARTS & CRAFTS FESTIVAL, PIO PICO STATE HISTORIC PARK 12 NOON - 3:30. SPONSORED BY PIO PICO MANSION DOCENTS.

17, MERCURY SAVINGS LUNCHEON AND PROGRAM. PRIZES. A FUNDRAISER, \$5 each, call 691-4227 before May 10.

JUNE

23, 24, 25, Conference of California Historical Societies. Hotel San Diego. Call 945-3871.

JULY

9, 10, UPTOWN WHITTIER FESTIVAL.

See Page 16 for Membership categories and fees.

APPLICATION FOR MEMBERSHIP IN THE WHITTIER HISTORICAL SOCIETY

Name _____ Date _____

Spouse's Name _____

Address _____ Telephone _____

Street

City

State

Zip

Enclosed is my check payable to Whittier Historical Society in the amount of \$ _____ for _____

Type of membership _____

Mail check and Application to: Whittier Historical Society
P. O. Box 561
Whittier, CA 90608

WHITTIER HISTORICAL SOCIETY OFFICERS

President
Myron Claxton (82-85)
First Vice President
Virginia Boles
Second Vice President
Roger Wolcott
Recording Secretary
Barry Kerns
Corresponding Secretary
Ray O'Connor
Treasurer
Evelyn Larkins

Whittier Historical Society offices at

WHITTIER MUSEUM
6755 Newlin Ave.
Whittier, CA 90601
(213) 945-3871

Office Hours
Tuesday - Friday 10 a.m. - 4 p.m.
Joe DaRold, Museum Director

The Whittier Historical Society invites all persons interested in the history and future of Whittier to become members of the Society. Membership year begins the date dues are paid.

STUDENT \$5

INDIVIDUAL \$10 FAMILY \$15
SUSTAINING \$50 SUPPORTING \$100
GRANTOR \$250 BENEFACTOR \$500
SPONSOR \$1000 LIFE MEMBERSHIP \$2500

Corporate memberships are also solicited and begin with \$50 for a Sustaining membership. Other categories are as above.

Whittier Gazette is the official publication of the Whittier Historical Society.

Editor: Virginia Mathony 945-3871
Asst. Ed.: Marilyn Jensen

Send or deliver copy for **Gazette** to Whittier Museum.

Whittier Historical Society

P.O. Box 561

Whittier, California 90608

NON-PROFIT ORG.
U.S. POSTAGE
Whittier, CA
Permit 202

NEW EXHIBIT - APRIL 16
GAMBLE HOUSE TOUR, APRIL 20
LUNCHEON & PROGRAM, MAY 17
Details Inside

DATED MATERIAL