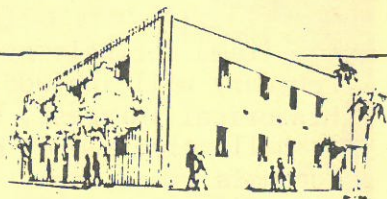


# The WHITTIER GAZETTE



WHITTIER, CALIFORNIA

---

THE NEWSLETTER OF THE WHITTIER HISTORICAL SOCIETY

---

VOL VIII

FEBRUARY 1983

No. 6

---

## THE MAKING OF A MUSEUM

Anyone who has walked into the Whittier Museum recently falls back in astonishment and exclaims, "I can't believe it - you've done so much!" And all it took was money and an endless amount of work by countless volunteers to get to the exciting point where we are today.

Under the direction of our contractor Don Carty, Maury, Earl, Lynn and Wendell are about finished with the Museum Shop and are completing all the details on the store fronts, Queen Anne house and the barn. The diorama is framed in and Bob Bates and his "miniature makers" are working toward completion of that display which will be the bases for the oil exhibit. Only if you are in the building daily can you believe the painstaking attention to details these people are applying to this construction.

Because the Museum Shop Committee is the first group in the building

that will see the first phase of their contribution to the whole plant ready to go, we are featuring the Museum Shop in this issue.



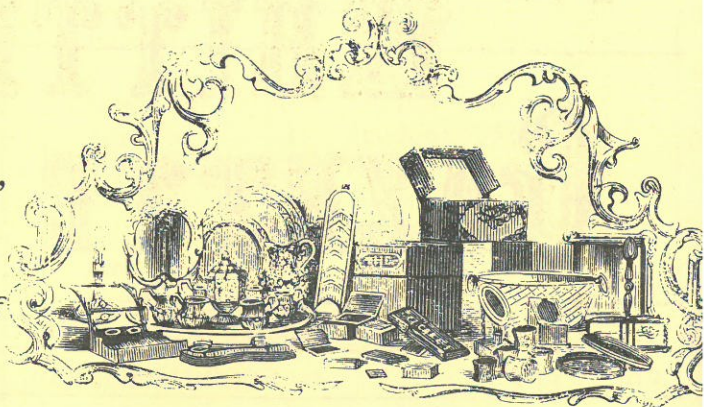
## THE MUSEUM SHOP

Most of the items in the Museum Shop, in addition to the furnishings and the interior of the shop, try to reflect the atmosphere of the Museum. As visitors pass through the Whittier Museum we hope they will take with them, not only a wonderful experience of being able to step back briefly in our history, but an opportunity to take with them a remembrance of Whittier.

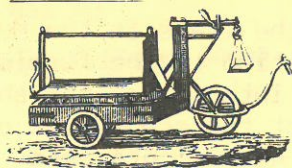
This they can do by stopping in the Museum Shop; for there they will undoubtedly find an item of historical interest.



Items for sale at the end of February will include: Books of historical interest, stationery, a small selection of silver and turquoise rings, small brass items, miniature replicas and a few miscellaneous unique items. We hope at a later date to have available reproductions of some of the Museum's permanent collection for sale.



The Selection Committee, under the chairmanship of Wilma Benson, is now accepting items on consignment from local crafts persons. Items may be brought to the Museum during regular business hours and must be left at the Museum for a maximum of 10 days, giving this committee time to review each item for consideration. A contract with each consignor is mandatory. Interested persons may also call Charen McFarland at 693-0064 for more details.



The Museum Shop is operated and managed by the Whittier Historical Society Docents with all the profits returning to the Museum general fund. A separate committee within the Docents has been responsible for the organization of the shop. Charen McFarland is chairman of this committee. This committee is divided into individual areas of responsi-

bility and are as follows: Kathy Arnold and Betty Evans chair Personnel, Ruth McFarland, chairs Finance, Claire Irving chairs Legal and Interior aspects and Wilma Benson chairs the Selection group.

The construction and the interior furnishings of the Museum Shop have been made possible through a donation from Mrs. Leona Myer.

Help Wanted. At the present time there are two positions not filled: Manager and Bookkeeper. Both positions are volunteer at this time. Also the Museum Docents are in need of additional members to assist with sales in the shop. No experience is necessary as all volunteer sales persons will be trained in sales procedure.

Here is an opportunity to spend a few hours a month in the Museum where you can enjoy and learn and you will know how much we appreciate your time.

You will be interested to know



that the lovely doors at the entrance to the Museum shop are from the Ogelsby/Mattern home recently dismantled by our museum buffs. Also the upper trim brick is from the William Penn Hotel and the lower brick from the Ogelsby/Mattern home.

The Museum Shop will be open for business on February 26 and 27 from 1-4 p.m. You'll be delighted with its charm.

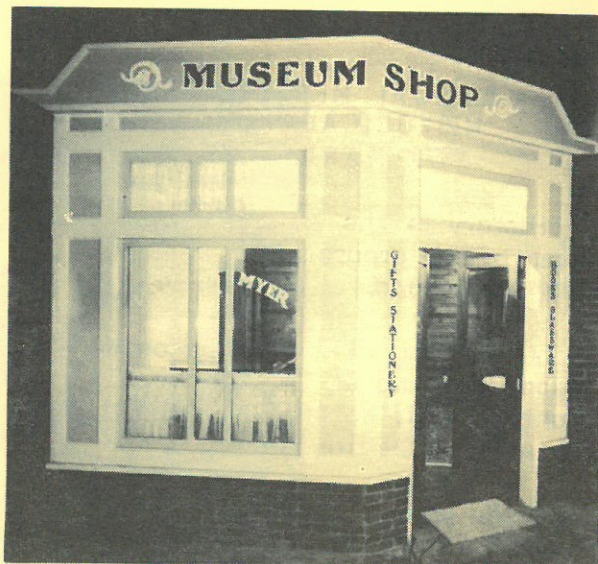


Photo by Owen Lampman



ANNUAL MEETING OF  
HISTORICAL SOCIETY SET  
FOR MARCH 16, 1983

"History In The Making" will be the topic of the program at the Annual Dinner meeting.

The meeting will be held on Wednesday evening at the California Country Club, Workman Mill Road. A social hour begins at 6:30.

As you know, the Annual Dinner Meeting is an important one for the Society. It is an opportunity for us all to get together, to review the progress of the past year, and to show our support for our incoming officers by being present at this installation. Together we have achieved a great deal during the past year and, in our own special way, we are making Whittier history right now.

It seems very appropriate, therefore, that for this dinner meeting we raise our sights just a little to view our Greater Los Angeles Area. We are honored to have as our speaker a representative from the Los Angeles 1984 Olympics Organizing Committee who will tell us about their organizing and fundraising work; the progress on the Olympics to date; and something of the background, history and ethics of this wonderful historic event. We hope you will all come for a most interesting and inspiring evening.

Tickets are \$15 each for dinner. Please invite your friends and neighbors too.

Reservations will be taken by Ed Irving, 8114 Michigan Ave. 90602, 698-4579. Deadline Mar. 6.

A Society MEMBERGRAM will be mailed soon with a reservation order blank for your convenience.



WE ARE PROGRESSING

Somewhere along the line of old adages "anything worth doing is worth doing well" was heeded by our Board of Directors and this theme has filtered on to those building a museum. Making a monument takes time and needs the patience of the observers. It takes money too, and as funds are available to begin another phase that project may be as invisible to the viewers as preparing the storage vault or as ostentatious as hanging the Downey plane or as practical as building an elevator.

Time is not on our side when it comes to the DALE LONG ETHNIC ART EXHIBIT. This is scheduled to come down in mid-March. The response of visitors has been most complimentary from appreciation of the layout of the exhibit to the delight in examining an individual piece.



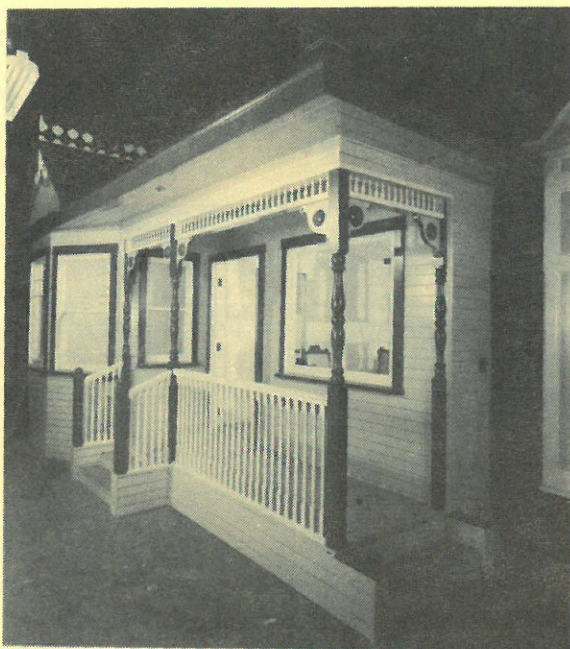


Photo by Owen Lampman

## THE QUEEN ANNE HOUSE

No one of us can be living in a house so lovingly and precisely constructed and furnished as our Queen Anne. Designing the building involved incorporating artifacts like the door from the home in which Lu Henry (Lu Henry Hoover) lived in as a child, the railing on the porch had proudly graced the balcony at the William Penn Hotel, and cabinets in the house are from the Ogelsby/Mattern house. Thanks to Chester Butler for saving the door for us for so many years.

Both Curtis and Sweet and John Ericson, along with California High School woodshop reproduced the Victorian trimmings for the porch area. Ed Perry, Valerie Bates and Bob Brown have long been at work doing the interior decor for a parlor and kitchen of the 1910 era and have been locating the necessary furnishings to be ready to set up housekeeping as soon as the interior is completed. ✓

The Queen Anne will be ready for visitors on February 26 and 27 from 1-4 p.m.



## MAIN STREET

Strolling down "Main Street" you will be able to gaze into the store windows of the past at various merchandise from our collection that was "studied on" and bought by folks nearly 100 years ago. (For ridiculous prices, we might add.) Don is working with pictures of our old store fronts and incorporating reclaimed structural parts to produce "real" shops.



## THE DIORAMA

The Diorama depicting the whole Whittier area about 1910 as seen from South Whittier is developing. Bob Bates is working toward as authentic a simulation of the town, ranches and oil derricked hills as can be supported with documentary information.

This will be a memory trip for many of us and a revelation to our children.



## THE BACK ROOM

The "back room" which is in charge of Mary Ann Rummel, with the help of the National Charity League and docent volunteers, is in pretty good shape.

The biggest part of the iceberg - the record keeping - has now begun. The procedures are written and by following the internal "bible" we will aim at completing the information necessary to make the collection usable instead of a bunch of stuff in boxes.

If it took 1,150 hours just to count 5,629 pieces, you can imagine what it will take to complete the five and six other parts of the accessioning, then see to proper cleaning and containment.

## LEGACIES

The Whittier Historical Society would appreciate being remembered in the will of those friends who want the preservation of Whittier history to continue.



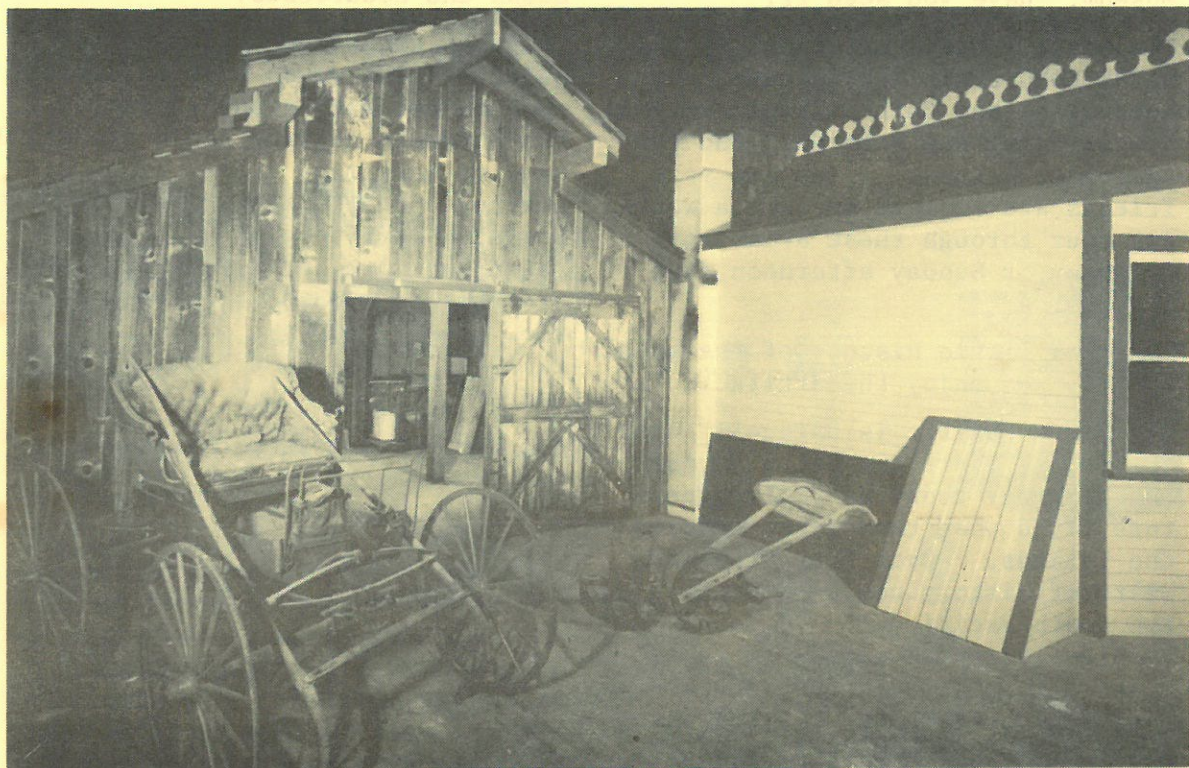


Photo by Owen A. Lampman

THE BARN. What a glorious final resting place for well-weathered wood from an old shed torn down at the lumber yard by the Museum Buffs. Now it stands as a real barn in a museum just like a normal part of our Whittier landscape eighty years ago.



## A VISIT TO THE SOUTH PACIFIC

There's a bit of the South Pacific in the Gallery at the Whittier Museum. Have you seen it?

The South Pacific artifacts in the WAYNE LONG EXHIBIT originate from Australia, New Guinea (Sepik region), New Britain, New Hebrides, and the Admiralty Islands. You and your friends are invited to take a walking tour through these areas any Saturday or Sunday afternoon from 1-4 p.m.

Here's a little history of the area to help you enjoy the artifacts.

The South Pacific is unique in that the people there are still living the same way today as their ancestors lived when they first settled the islands. Over four thousand years of history can be traced to the South Pacific when various peoples, carrying with them their home cultural traditions, settled in a new culture; others staying with their own group and still others joining together to form a new homogeneous group.

Religious beliefs are ruled by two different but powerful spirits; spirits of the dead and spirits of natural forces; fire, wind, rain and mythological and legendary figures.

Ceremonies are performed to appease and gain favor with spirits. They are also used to initiate newcomers into a secret cult or into adulthood. These ceremonies also have social importance. They call for

the making of drums, shields, figures, staffs, personal ornaments, masks and headresses.

Only men are allowed to make art objects. The women work on crafts, such as net making and pottery. Pre-European carving tools are still used to make many items. They are sharpened boar's tusks and rat teeth. Scraping is done with mussel and cockle shells; large rough leaves are used to smooth and sand. As you view these items you will be able to picture in your mind how they were made.

Geometric order is pronounced in the South Pacific. Designs have religious connotations and some are so elaborate that the art form may lose its original shape and become abstract. Dramatic appeal is also a tendency. Items found in New Guinea take on an expressive emotional quality. They almost seem to want to come to life. We are glad that some of them don't!

Items on display include funerary totem posts and bark painting from Australia; headresses and masks from New Hebrides, New Guinea and New Britain. Household items include carved wooden stools and a neckrest and suspension hooks from the Sepik River of New Guinea.

No need to call your travel agent for this tour - just come to the Museum and enjoy it. We'll look for you.



OWEN'S WISH LIST - We still need several things to help furnish our new buildings, such as, Pails, Feed bag, Milk Can, Milk Stool, Churn, Incubator, Food grinder, Water Pump, Stove, Coffee grinder, Grist mill, Toys, Rug beater, Wash board, Bowl & pitcher, Cracker Tins, Apple peeler, Door knocker or ringer, Iron, Small animal traps, Baskets, and we could go on and on.

Please call the Museum at 945-3871 if you have any of these you would like to donate to the cause.

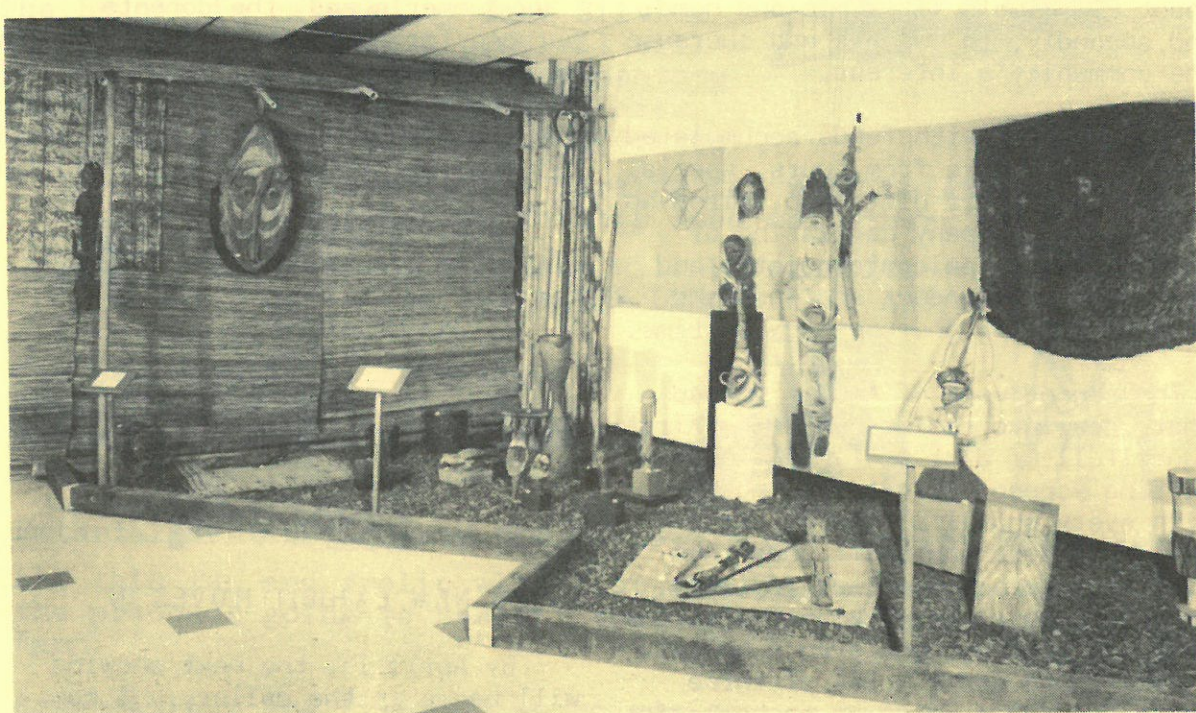


Photo by Owen A. Lampman

Above is a picture of the South Pacific exhibit in the upstairs Gallery at the Whittier Museum. It is one section of the extensive WAYNE LONG ETHNIC ART collection which will be on exhibit each Saturday and Sunday from 1-4 p.m. until March 15 (with the exception of March 6).



## P I O   P I C O   " D I G G I N G S "

In the spring of 1982, the Docent Committee at the Pio Pico State Historical Park first initiated the idea for an archeological excavation at the park. Their purpose was two fold: First, to uncover artifacts providing greater knowledge about Pio Pico's lifestyle and home, and secondly, to improve and increase the community's interest.

The docents, with funds accumulated through the years from tours, special events, and their gift shop, hired an independent company consisting of archeologists, paleontologists, and historians to conduct and lead the volunteers on a journey back in time.

The second week of August turned that idea into reality when the first shovelfull of dirt was flung into the sifting screen. Excitement mounted with every shovelful thereafter as the volunteers and staff unearthed bits and pieces of pottery, dishes, bones, teeth, whole ink bottles, wine bottles, buttons, and even a bullet. In all there was a total of three units dug. One being an archeologists dream - the trash pit. Another unit revealed an original foundation to the west wing of the mansion washed away during the flood of 1867.

At the end of August, the wine cellar at the mansion was filled with boxes of artifacts to be sorted, cleaned, and catalogued.

The Docent Committee, having

depleted its funds on Phase I, is now in the process of raising more money to begin Phase II and to purchase materials needed to house the newly found artifacts and future uncovered artifacts.

By summer's end, the docent's purpose for the dig was achieved. Not only were the artifacts uncovered, but an immense interest and involvement by volunteers from neighboring communities was initiated.

Jill Waters, Docent  
Pio Pico Mansion



### A NEW EXHIBIT MOVES IN

By April 15, the next showing will be up in the gallery. A committee headed by Dee Tenney has involved the school children of the Whittier, South Whittier, and East Whittier districts to work on an art project using "Our Town" as the theme. A representative of the Whittier Art Association has been sitting with this group and we are most grateful that their experience in the art fields and in exhibiting will be guiding us.



## FUND-RAISING BRUNCH TO BE HELD MARCH 6

AT THE WHITTIER MUSEUM - 1:00 P.M.

Don't miss the unique opportunity to attend a champagne brunch at the Willier Museum, 6755 Newlin St., fashionable clothes of the 1900's, and to inspect old cars of the era.

The Brunch is catered by John Silvius and will be served at 1 p.m. It will be followed by the turn-of-the-century collection of fashions of JOYCE REED. Models will be well-known Whittierites.

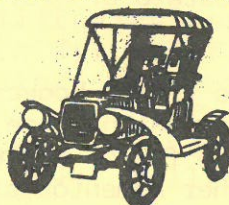


On view in the parking lot will be ANTIQUE CARS belonging to Phillip Reed and others.

Inside the Museum will be exhibits including the WAYNE LONG ETHNIC ART Collection.



You can browse in the newly opened MUSEUM SHOP, peek in the windows of the QUEEN ANNE house, and explore the BARN.



Entertainment will be by the Society's own harpist RUTH GRAMS.

All this fun and frolic will cost only \$15 a person with the proceeds going to benefit the Queen Anne House and the Barn.

Reservations are limited, so we advise you get yours in early. This event is open to the public, so invite your friends.

Virginia Boles, 1761 E. Woodcrest, La Habra CA 90631, is taking reservations. Make your checks payable to the Whittier Historical Society.

Watch for a MEMBERGRAM with a reservation blank.

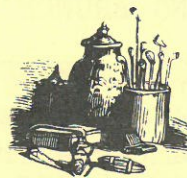


BE A PART OF THIS HISTORICAL DAY! COME AND ENJOY!



## BAILEY HOUSE NOTES

A visit to the Bailey House at 13421 Camilla Street in Whittier would be of interest to those wishing to commemorate the birthday of Abraham Lincoln.



Among the newest acquisitions is a print of Lincoln and his Cabinet members meeting to discuss his Emancipation Proclamation. It was given to the Bailey House by Mildred Johns.

The print hangs above a bookcase that was probably used by Lincoln in his law office in Springfield, Ill. The bookcase was given to the Bailey House through the estate of Mrs. Harvey Dye.

Among the items in the bookcase are Rebecca Bailey's watch, some of her quilt patches, a family bible, a scrapbook and other mementos of the Bailey family.

Also on display for February are some very old valentines loaned by Virginia Schallenberger and Lois Joyce.

The Bailey House is open for tours each Wednesday and Sunday from 1-3 p.m. It's a charming home and a visit there is an exciting trip into Whittier's past.

Marge Freidhof  
Bailey House Decent

## DOCENTS ARE A VERY ACTIVE GROUP

Along with leading tours and sorting through artifacts, the Museum Docents have also been getting together for some fun times.

On January 31, twelve docents attended the Southern California Docent League meeting held at the new Cabrillo Museum in San Pedro. Following a most informative panel discussion on the formation and building of a new museum, a tour of the museum was given by their docents. The next meeting of the Docent League will be held in San Diego on May 2, so mark your calendar and join us for another interesting day.

Museum Docents will now be leading tours of the new museum on Saturdays and Sundays. They will be recognizable by their ruffled blouse and long brown skirts. (Pants and vests for men). Any one interested in becoming a Docent and giving three hours a month to the museum, please contact the museum or call Diane Sattler at 947-3458.

Diane Sattler, Chairman



## Etcetera

NEW BOARD OFFICERS were elected at the Society Board meeting on February 10. They are:

Myron Claxton, President  
Virginia Boles, 1st Vice President  
Roger Woolcott, 2nd Vice President  
Berry Kerns, Recording Sec'y.  
Ray O'Connor, Corresponding Sec'y.  
Evelyn Larkins, Treasurer

They will assume their offices on March 17.

TWO ON THE TOWN crew was out to the Richard and Nadine Hathaway home recently to photograph their home and museum. It was quite an extensive interview. Watch for the T-V showing. No date has been scheduled as yet.

PLEASE CHECK THE LABEL on your Gazette, asks Phyllis Pearce, membership chairman. The number on the top right hand corner indicates the month in which your dues are payable.

MUSEUM HOURS. The Museum will be open Saturdays and Sundays from 1-4 through March 12. And it will be open on March 5 the day prior to the Brunch. The public is invited to visit at these times.

MUSEUM CLOSED on March 6 unless you have a ticket to the Brunch. It will also be closed from March 13 to April 16, while a new exhibit is being arranged in the Upstairs Gallery.

DO YOU KNOW? Bernice Bordeaux is looking for information about a Lewis B. Garden and his wife Lydia (or Alidia) Frazier Garden. Lewis was a "farmer" in Whittier and died in 1920 and was buried in Redding. His wife was killed by a train in 1928. The death certificates were signed by Lewis Jr. and F. D. Garden of Redding. If you can shed any light on the family, please contact Bernice, R. R. I, Box 3844. Wallace, Michigan 49893.

BOTTLES, ALUMINUM AND NEWS-PAPERS are welcome at the Lions Recycling Center, Mar Vista and Whittier Blvd. from 9-12 every Saturday. Tell them the Whittier Historical Society sent you and we'll get the credit. The Society appreciates the income it receives when members take their "recycles" in.



## C A L E N D A R

The Museum maintains a master calendar. You are welcome to list your activities and to check that there are no duplications.



Feb. 16 Bailey House Docents meet at 10 a.m. 698-3534  
Exhibit Committee meets at 2 p.m.

Feb. 17 Mulberry School Tour - 10 a.m.

Feb. 28 Docent Meeting - 3 p.m. 947-3458

March 2 Bethany Christian Church School Tour 1 p.m.

March 5 Pio Pico Docents meet - 9:30 693-2867

March 6 Champagne Brunch, Fashion Show and Old Car Show  
691-4227

March 11 Flag presentation by Native Daughters of Calif.  
10:30

March 15 Last day of Wayne Long Exhibit.

March 16 Annual Dinner Meeting. 698-4579

March 16 - April 15 Museum closed Saturdays & Sundays.  
A new exhibit will be ready on April 16

April 2 Pio Pico Docents meet 9:30 a.m. 693-2867

April 16 New Exhibit opens - Whittier Elementary Schools  
Art Exhibit. Museum will be open Saturdays and  
Sundays from 1-4 p.m. for viewing exhibit.

April 20 Gamble House Tour & Lunch - 691-4227  
Watch for MEMBERGRAM for reservation information

April 25 Docent Meeting - 3 p.m. 947-3458

May 17 Mercury Savings Luncheon and Program 691-4227

Note: The Museum office is open Monday through Friday from  
10 - 4:30 - Telephone 945-3871. Volunteers are  
working during these hours along with Don Carty,  
contractor. If you have time to help, please call  
the Museum.

The Museum also needs Docents to give tours, to work  
in the Museum Shop, to help with the archives, etc.

The Museum Shop will be open when the Museum is open  
to visitors.



# NEW MEMBERS THROUGH JANUARY 31

(Please remove and add to your directory)

Kristina & Company  
M/M Owen Newcomer)  
14450 Whittier Blvd.  
Whittier CA 90605  
696-4815

Mrs. Morgan Halvorson (Anna S)  
15424 Condesa Dr.  
Whittier CA 90603

Laura Anthony  
6337 Painter Ave  
Whittier CA 90601  
696-4433

M/M Larry A Haendiges  
13815 Sunset Dr.  
Whittier CA 90602  
693-7331

M/M Jerry Haendiges  
13808 Sunset Dr.  
Whittier CA 90602  
698-3062

M/M Robert Haendiges  
13821 Sunset Dr/  
Whittier CA 90602  
696-8138

M/M Howard Hunter (Nora)  
13554 Starbuck  
Whittier CA 90605  
693-1105

M/M Robert H. Settlage (Susan)  
5610 Hoover Ave.  
Whittier CA 90601  
699-1141

M/M Donald Sheeler(Marian)  
8219 Strub Ave  
Whittier CA 90602  
693-5689

M/M Lester L Harris (Barbara)  
8066 California Ave.  
Whittier CA 90602

M/M Jerald Hampton (Stephanie)  
12422 Floral Dr.  
Whittier CA 90601  
692-1980

Josephine H Owens  
55540 McKenzie River Dr.  
Blue River, Oregon 97413  
( ) 822-3329

M/M Robert Selfridge  
(Marwynne)  
8711 La Entrada  
Whittier CA 90605  
698-5982

M/M Robert Pellissier  
716 Arroques Dr.  
Fullerton CA 92635

Mrs. Dougan L Jones (Helen)  
8114 Friends  
Whittier CA 90601  
696-3984

M/M E. C. Babson (Ruth)  
5528 Acacia  
Whittier CA 90601  
692-6536

M/M Robert Long (Diane)  
2516 Cliff Dr.  
Newport Beach CA 92663

M/M William Jackson (Laura)  
8404 Catalina Ave.  
Whittier CA 90605  
693-5894

M/M A. S. Carroll (Ardis)  
6022 Greenleaf Ave.  
Whittier CA 90601

Patricia O'Toole  
6252 Bright Ave.  
Whittier CA 90601  
698-2697

M/M Joe Sanchez & Lisa Cuevas  
14032 Trumbull St.  
Whittier CA 90604  
946-1939

M/M Albert W. Kerker  
11067 Lorene St.  
Whittier CA 90601  
695-6357

## New Address

Marion M. Keasbey  
527 Valinda  
West Covina, CA 91793

M/M William R. Craig  
613 Inverse Court  
Fullerton CA 92635

New phone number  
Dr/M Dean C Denman  
692-5101



WHITTIER HISTORICAL SOCIETY  
OFFICERS

President

Sylvia Foltz (82-85)

Vice President

Ed Irving (82-85)

Recording Secretary

Ray O'Connor (80-83)

Corresponding Secretary

Barry Kerns (82-85)

Treasurer

Evelyn Larkins

Whittier Historical Society  
offices at

WHITTIER MUSEUM  
6755 Newlin Ave  
Whittier, CA 90601  
(213) 945-3871

Owen A. Lampman, Director

The Whittier Historical Society invites all persons interested in the history and future of Whittier to become members of the Society. Membership year begins the date dues are paid. Student \$5; Individual \$10; Family \$15; Sustaining \$50; Supporting \$ 100; Grantor \$ 250; Benefactor \$ 500; Sponsor \$1000; Life Mbrshp\$2500.

Corporate memberships are also solicited and begin with \$50 for a Sustaining membership. Other categories are as above.

Whittier Gazette is the official publication of the Whittier Historical Society.

Editor: Virginia Mathony, 693-1194  
Ass't Ed: Marilyn Jensen, 943-9627

Send or deliver copy for Gazette to Whittier Museum, 6755 Newlin Avenue.

## Whittier Historical Society

P.O. Box 561

Whittier, California 90608

Non-Profit Org.  
U.S. POSTAGE  
Whittier, CA  
Permit 202

Mrs Anna W Benson  
6319-A Comstock Ave  
Whittier CA 90601