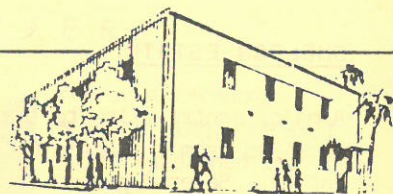


The WHITTIER GAZETTE



WHITTIER, CALIFORNIA

THE NEWSLETTER OF THE WHITTIER HISTORICAL SOCIETY

Vol. IX

OCTOBER 1983

No. 4

WHITTIER HISTORICAL SOCIETY GENERAL MEETING OCTOBER 23, 1983, 2 p.m.

The General Meeting of the WHS is planned for SUNDAY, OCTOBER 23, from 2 - 4 p.m. and will be held at the Nelles School for Boys in Whittier. (Whittier Blvd. at the end of Philadelphia St.)

The program will be held on the patio of the Superintendent's Building at the east end of the parking lot, east of the Security Building.

The program will be a presentation on the history of the State School for Boys, a Whittier institution since the late 1800s.

Did you know that Father Flannagan lasted only one month here as superintendent before founding Boys' Town?

On exhibit will be the Nelles mini-museum of school memorabilia - a fascinating array of letters, publications and ankle chains.

Schedule: 2:00 p.m. Refreshments
2:30 p.m. WHS Business Meeting
3:00 p.m. Featured Program

The meeting is open to the public.

UPSTAIRS GALLERY

"BIRDS, BEASTS & BLOSSOMS" exhibit through November 13. (see page 6)

DOWNSTAIRS

"MAIN STREET 1910"

APPLE-HEAD DOLLS

DIORAMA OF THE WHITTIER HILLS

MUSEUM HOURS: Saturdays and Sundays
1 - 4 p.m. Groups are welcome by appointment. Adults \$1, Under 18 - 25 cents.
Members free.

DATES TO REMEMBER

Oct. 2, HOME TOUR - still room - 691-4227
Oct. 23, WHS GENERAL MEETING
Oct. 27, PHOTO EXHIBIT 5:30 - 6:30 p.m.
Oct. 27, LECTURE - 7:30 p.m. Anthony Shay, (page 6)
Nov. 5, ART AUCTION - Fundraiser (see page 4)
NOV. 26, TEDDY BEAR EXHIBIT begins (page 7)
DEC. 3, TEDDY BEAR PICNIC, (page 7)
JANUARY 22, 1984, WHS GENERAL MEETING
MARCH, 1984, WHS ANNUAL DINNER MEETING
SPRING, 1984, AMERICAN INDIAN EXHIBIT
FALL, 1984 FINE ARTS EXHIBIT
WINTER, 1984, CIRCUS! CIRCUS!
SPRING, 1985, "A DAY IN THE UKRAINE"

RECENT ACQUISITIONS

SHELDON ESTATE

A major contribution to the museum has been received from the Doris D. (Jordan) Sheldon Estate. Several pieces from this donation were features of a recent exhibit. Included were an extensive collection of fine Cobalt glass, coal oil lamps, an early White treadle sewing machine which, among other items, lent their ambiance and charm to the display. Currently on exhibit downstairs are examples of enamelware, old dishes and kitchen utensils, Delft type ceramics, a roasting oven, jars designed as containers for flour, salt, sugar and tea, a period mail box, and many other artifacts that will add significantly to future displays.

Collections of phonograph records and of buttons were part of this donation and will serve well in the Children's Museum.

Doris Jordan Sheldon died January 11, 1983. Items were donated in her name by the sole beneficiary of the estate, Alasa J. Prella, her sister, who now lives in Oregon, with the assistance of the estate's local attorney and Administrator CTA, Warren G. Day. Doris Jordan Sheldon and Alasa Jordan Prella's parents were George G. Jordan and Blanche S. (Crosby) Jordan who moved to Whittier from Central City, Iowa in 1910 to join the former's brothers Orin and Dick, somewhat earlier settlers here.

George G. Jordan and Blanche S. Crosby were married in 1883. There were six children from this union, all of whom were born in Iowa. The Oldest, and only surviving off-spring is Alasa J. Prella. The others were Wentworth, Pauline J. (Peters), Katherine (Cowan), Ezra G., and Doris D. (Sheldon).

George G. Jordan and his son Wentworth left Whittier in 1914. They leveled the land and planted 40 acres of orange groves in Orange

Cove, Tulare County, but he and his wife maintained a residence in Whittier while ranching in Orange Cove.

DONOR SUPPORT . . .

Recent donations include:

\$2,000 from the R. C. Baker Foundation to help with completion of Phase I.

\$1,000 from East Whittier Rotary Club to be used for Exhibit Gallery track lighting.

\$ 250 from Kiwanis Club of Whittier for Phase II development.

MATCHING GIFT PROGRAM

The Security Pacific Foundation has established an employee matching gift program for cultural organizations such as our museum. If an employee contributes a minimum of \$25, Security matches it on a dollar for dollar basis. Other companies have similar programs. It may be worthwhile to ask if your employer has such a program.

ENDOWMENT FUND

An Endowment Fund has been established. Can you help it grow? Remember, this fund helps the Whittier Historical Society in perpetuity, since only the interest is used for operating expenses.

MEMORIES OF WHITTIER

Have you noticed the picture of Whittier's 1912 May Queen walking down the steps of the original gazebo in Central Park? It is a new picture at the Whittier Museum displayed on the wall opposite the Queen Anne house. Perhaps you have wondered who she is. Her name is Edna Thornburgh, the daughter of Mr. and Mrs. Joel

Thomas Thornburgh, early pioneers of Whittier. They sold their farm near Oskaloosa and brought their family to Whittier in 1905. The home which they built still stands on Washington Avenue, facing Central Park.

Upon arriving in Whittier from Iowa, Edna Thornburgh and her parents found a smog-free paradise. She and her friends watched sunsets from Reservoir Hill (the old Murphy Hospital parking lot), and had wiener bakes at "The Peppers" in Turnbull Canyon. They explored the canyons and hiked the peaks. Hiring a three-seater rig and team, they would drive to Camp Baldy or Long Beach for an all-day outing. They were always chaperoned.

In reminiscing, she used to recall that in the first decade of this century Whittier social life was a hybrid: an odd mixture of the relaxed, free ways of the Old West and the prescribed social customs brought by settlers from the East. One always called after one was entertained. Eight calls was a good tally



MANDOLIN CLUB. EDNA THORNBURGH
SEATED CENTER

for an afternoon.

When calling, one left cards, and when leaving a formal reception, one left cards on the table by the door. To not leave the appropriate number of engraved cards was almost a sin. Even in those decorous days the young people indulged in outdoor dances which had been considered taboo in the East and Midwest.

Enrolling in Whittier College in the fall of 1906, Edna Thornburgh

joined a musical group called "The Mandolin Club" She served as pianist for the club which included three men and two women.

A mandolin is an instrument consisting of four or five strings stretched over a deep, rounded box. The mandolin is one of several members of the lute family. These beautiful instruments were adopted by the Arabs from a Persian two-string "Tambur." The Arabian version consisted of a membrane-covered gourd, strung with silk and played with a shell or quill. Lutes range in size from the widely-used Neopolitan mandolin of two feet long to the large 6 feet Roman "Chitarone."

The group became very popular and were asked to play for numerous civic and social functions. They used the Thornburgh home for their practice sessions, and it became the center of many social activities of early Whittier. J. T. Thornburgh, better known as "Tommy," was a city councilman and involved in many civic affairs. He and his wife, Sarah

Turn to page 4

ART AUCTION FUNDRAISER

SUNDAY, NOVEMBER 5, 1983

WHITTIER MUSEUM, 6755 Newlin

Preview and hors d'oeuvres 7:00 – 8:30 pm

No Host Bar

Door Prizes

AUCTION begins at 8:30. This event is sponsored by the East Whittier Junior Women's Club for the benefit of MEALS ON WHEELS and the WHITTIER MUSEUM.

Please help support this fundraising activity. Your attendance alone will ensure greater proceeds for the Museum.

Admission \$5 couples, \$2.50 individuals.
Call Janice Delehanty, 691-1269 for tickets.

Memories, cont'd.

Elizabeth, were devout Quakers and active members of the Friends Church.

In the fall of 1910, a young professor of chemistry arrived to teach at Whittier College. His name was Leslie Carson Nanney. A romance soon blossomed between him and Miss Edna Thornburgh, a senior coed. After one year on the college faculty, he went to Ames, Iowa to do graduate work at the state university. Upon his return, the two were married in a Quaker ceremony in the family home on July 9, 1914. Over one hundred guests attended the wedding which included an elaborate reception.

Other Thornburgh family members who were residents of early Whittier included Edna's brother, Walter Thornburgh and his wife, Florence Maple Thornburgh. They were owners of a music store here for several years. Mrs.

Thornburgh is still living and resides in Whittier. Grace Thornburgh Hamilton, sister of Edna and Walter, and her husband, B. A. Hamilton, founded the old Poinsettia ice cream parlor. It was always a popular meeting place.

Catherine Nanney Biggers
(daughter of Edna Thornburgh Nanney)
Catherine is a docent at the museum.

LET'S TAKE A WALK AROUND THE BLOCK

Are you interested in taking a walking tour of Whittier? Great! But first we need a few volunteers to help develop a brochure guide - one that will cover Uptown, East Whittier, West Whittier, and all points of interest in between. We would like a couple of seasoned walkers and a couple of people knowledgeable about the buildings and sites of "Old Whittier," who can lend us their expertise on things to know and where to go. Please call Whittier Historical Society office (945-3871) if you can help.

WHAT WOULD YOU LIKE TO DO?

Are there things like the above walking tour that you'd like to see WHS develop? Please let us have your suggestions. Even though Whittier's Centennial is not until 1987, there are some projects which could take a couple of years to develop or prepare. Let's get started early!

DID YOU KNOW that in the Spring of 1980 the goal of the Museum Foundation was to find a suitable site for a museum by 1987? How far we've come in so short a time!

THE MUSEUM SHOP is alive and well.
Remember to shop with us.

WHAT HAPPENED TO THE SCENIC RAILWAY OF THE PUENTES?

The dateline in the Whittier Daily News is January 18, 1907, and the article stated that the Bowman Cable Traction Company of Chicago was interested in Whittier and declared a scenic railway would be built "along the crest of the horseshoe of the Puentes back of Whittier. The money is ready, a syndicate has been formed, and all but details have been arranged."

This statement was made by George W. Bowman, president of Bowman Cable Traction Railway Company of Chicago. Mr. Bowman had been interested in railway building for fifty-four years and said he had never seen a better opportunity than in Whittier. "Not only for the making of a city which will attract wealthy home seekers, but for profit accruing from a scenic railway." Members of the syndicate were George H. Clark and Albert H. Wiser of Los Angeles, and three Whittier businessmen. They contracted to buy the forty-acre Bailey tract west of Mt. Lookout and planned to erect a fifty-room hotel on the site.

Several propositions were considered: 1) to establish the starting point and station at Hadley and Greenleaf, north of the News office. The object was to reach "Paradise Mount" (the name applied to the Bailey tract). Then

follow the best and shortest line, continuing from Paradise Mount to the North Whittier oil fields, then down the slope and back "to the place of beginning." The group was negotiating with Mr. Harvey for the purchase of the station site. 2) Another plan was "to purchase the 120-acre Worsham tract at the head of Philadelphia Street and gain the crest of the hills from that section. 3) Still another plan was to "climb the hills via the Murphy Oil Company fields and traverse the hills to the North Whittier Oil Company holdings, thence down to the level at the north end of Greenleaf Avenue."

"You may state," said Mr. Bowman, "that the road positively will be built. Such an enterprise is, of course, attended by many technicalities, yet these will be worked out."

"We are firm in the belief that no grander opening for such an enterprise exists anywhere in Southern California. Cars will be running over the route by July fourth of the present year."

Can anyone supply information on what happened to this project that was to do so much for Whittier?

ASSOCIATE MEMBERS

(July 23 to Sept. 16, 1983)

Morris, Dr/M Francis O'N (Elsie)
Siegfried, Ethel J.
Neece, M/M Sherril O. (Lois)
Snow, M/M Charles A (Myrtle)
Smith, M/M Robert (Helen)
Owens, M/M Lee (Erika)
Latson, Ralph

Skinner, Dr/M Earle C. (Nadine)
J. A. Crawford Co. (J.A. & Jamie)
Masiello, M/M Gerard (Helen)
Stebbins, M/M Richard (Evelyn)
Rosenberger, Dr/M Homer (Alice)
Farmer, M/M Malcolm (Anne)
Clanton, M/M Carl

Halliday, M/M Robert K. (Carlene)



BIRDS, BEASTS AND BLOSSOMS

The museum's new exhibit invites the viewer to see a variety of Oriental carpets in a unique perspective. By comparing the familiar elegant, finely woven, court-inspired designs with the bold, colorful, often whimsical, more crudely woven pieces of tribal nomads and villagers, you will see contrasts and appreciate the beauty of each.

Boundaries have changed and people have re-located during the course of history. This exhibit emphasizes the weaver and the purpose of the textile produced. Recognizing the weaver and the product of the loom offers more clues to the understanding of rugs than labeling them according to the country of origin.

Rugs are being lent for the exhibit by five local residents in addition to those lent from collections of Mary Jane Bloom and Marsha Bloom Gilbert, our curators. We are constantly amazed at the treasures harbored in Whittier.

Featured along with the rugs is a small but spectacular collection of costumes from the same parts of the world as the rugs. On loan from the AVAZ INTERNATIONAL DANCE THEATRE are several complete ensembles, including a Q'ashqa'i and a Baluchi. Various Persian and Turkish items of clothing will also be displayed.

The AVAZ company will be performing locally on January 7, 1984 (8:00 p.m.) at the La Mirada Civic Theatre. Anthony Shay's company specializes in authenticity of costume, movement and music. The performances are a festival for the eyes - don't miss it.

Anthony Shay, founder of the AVAZ INTERNATIONAL DANCE THEATRE, will present a lecture "Traditional Costumes of the Middle East and Eastern Europe" at the museum on October 27 from 7:30-9:00 p.m.

A variety of costumes from the AVAZ company,

MAIN STREET WINDOWS

Various small displays greet and intrigue the museum visitor. In the Main Street windows is a fascinating collection of Chinese memorabilia lent by Betty Lomax, who was born in Peking while her father was on military assignment there. Included are an unusual high-relief pottery vase, a man's walking stick with spiraling brass dragons, an exquisitely embroidered blue silk robe, and tinted photographs of pre-tourist Peking.

APPLE-HEAD DOLLS



Elmer Calkins, who built the scale model of an oil derrick, is currently exhibiting an impressively realistic-looking collection of 20 apple-head dolls. Elmer also built the miniature furniture accompanying the figures.

Another aspect of Elmer's talent is a collection of faces sculpted from tree-bark. On a trip through the Northwest Elmer and Edna bought two similar sculptures from a young Indian man. Elmer was so taken with the concept that he decided to create his own bas-relief figures from bark.

We are delighted to be able to share Elmer's considerable talents with you.

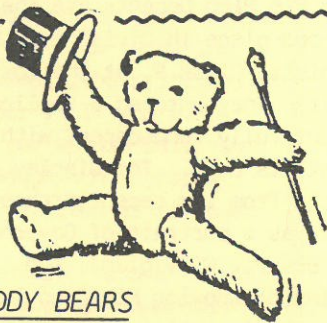
D I S P L A Y S

Joe Da Rold, Museum Director



ATURE

including Baluchi, Q'ashq'ai, Kuch, and Romanian dresses, are currently featured in the museum's exhibit of oriental rugs and textiles. Mr. Shay's lecture will be illustrated with slides. Admission is free to members of the WHS; \$1.00 to non-members.



CALLING ALL TEDDY BEARS

A mini-exhibit of great significance for teddy bears and teddy bear lovers will take place at the Whittier Museum November 26, 27 and December 3, 4.

Teddy bears from as far away as New York and England have flown in to be with their owners on this special occasion. Families of antique bears will mingle with contemporary bears in exhibit cases, throughout the Main Street buildings, and in the Upstairs Gallery. We would love to extend the exhibit, but most teddy bears are expected to be home for Christmas.

The highlight of the two weeks will be the Teddy Bear Picnic on December 3. Remember, all attendees are encouraged to bring their favorite bear(s) to the lunch. We hope to have an area set aside where you can purchase accessory items, either for your own bear or for holiday giving.

OLD TOYS SOUGHT



The museum is seeking old-fashioned toys for use in the Children's Museum. If you have any hidden away that you would care to donate, please call 945-3871. "Old" is a relative term but even toys from as late as the 1940's are of interest. If any of our readers has a particularly valuable collection of toys that they would be willing to lend for exhibit-only, we would also be interested in hearing from you.

MISSING LINK

We have an old Victrola phonograph, the hand-crank kind, that we would like to use in the Children's Museum, and we have a large collection of 78's we think the children will enjoy. What we need is a "missing link." Unfortunately, a small connecting part that joins the head to the arm is missing. If anyone can provide us with a replacement, or put us in touch with a hobbyist that might help us, please let us know.

"YES, WE HAVE NO. . ."

. . .HATRACK! We have a wonderful assortment of hats for kids to wear, but no place to hang them. Does anyone have a wood or brass hatrack he/she would be willing to donate for use in the Children's Museum?

MUSEUM NEEDS . . .

A Vacuum that functions
Your old towels

THE DOCENT PROGRAM

FRIENDS OF THE BAILEY HOUSE

The year was 1975 and many civic minded people had joined together to see that the Bailey House was ready for the Bi-centennial Celebration. A group of teenagers, Cadet Scouts, were making a quilt for the small bed in the middle bedroom. They had help from a number of local women; some of whom are docents at the Bailey House today. It was of special interest to Adele Nederburgh because her family had given the youth bed to the house. Among the teenagers was a shy, young girl from Nicaragua.

One Sunday this summer, eight years later, a young woman and her husband waited on the porch of the Bailey House for a docent tour. Adele often works among the flowers on Sunday and thought the girl looked familiar. The girl introduced herself as Sandra Alvarado Cerny (the Cadet from Nicaragua). She had come to see if she could recognize some of her handwork.

We are looking forward to welcoming those who are interested in the Bailey House at our Annual Membership Tea on Sunday, October 23, from 1-3 p.m.

Marge Friedhof, Publicity

MUSEUM DOCENTS

After being in existence for only a year and a half, our museum docent membership has grown to 54 at last count. Connie Bailey is now serving as the Docent Activities Director and is busy seeing that the museum is staffed every Saturday and Sunday afternoon. Also serving as officers for the coming year are Carol Saunders, recording secretary, and Virginia Boles, treasurer.

Duties of our docents include leading tours of the downstairs and upstairs exhibits, working in the archives, and selling in the Museum

Gift Shop. Training is held on the last Monday of each month at 2 p.m. preceeding our regular docent meeting at 3 p.m. If you would like to become a member of this fast growing group of ladies and gentlemen, please call the museum at 945-3871 or Diane Sattler 947-3458.

Diane Sattler, Chairman

PIO PICO DOCENTS TAKE PRIZE OF \$1,200.

The Pio Pico Docents are the proud winners of second place in Division 3, California History exhibit, Class 9, at the Los Angeles County Fair. They entered a replica of the Pico Mansion, fully landscaped, with the river flowing past its door. The display also included artifacts from the recent archaeological dig as well as a portrait of Governor Pico (painted by Beverly Girvigian), and a Herbert Hahn painting showing Pio Pico leaving the mansion for the last time.

We owe a "standing ovation" to Sig Anderson, husband of docent Ellen Anderson, for constructing the adobe replica. Without this, there would have been no exhibit.

Joining Sig in transporting and erecting the exhibit at the fair were Varlie and Elva Gordon, Wendall Keith, Owen Lampman, Ellen Anderson, Claire Radford, Dora and Ricardo Sanchez, Dora's son-in-law Primo Candia and his friends Cecil and Bob. Other supporters included the Pio Pico docents, Joe Da Rold, Don Carty and Bob Bates. They all deserve a big "THANK YOU."

The docents "baby sat" the exhibit from 10 a.m. to 10 p.m. for 17 days as well as staffed the Pio Pico Mansion five afternoons a week. Several friends also took turns at the fair and we certainly appreciated their help. It was a BIG job, well done.

Jill Waters, Publicity

LEGACIES

The Whittier Historical Society Endowment has been established with Mrs. Doyle Taylor, Hubert Perry and Earl Myer as trustees. The endowment is a basic key to the survival and growth of the society and its museum.

Several members have already included the endowment in their wills. Only the interest from investing the funds is used...the principal remains "forever". If you wish to join them, you should call your attorney, although a holographic codicil may be written as follows:

"I give and bequeath to the Whittier Historical Society, a non-profit corporation created under the laws of the State of California, located at Whittier, California, the sum of \$_____ for the society's permanent Endowment Fund."

TEDDY BEAR PICNIC



All Teddy Bears in Whittier and vicinity are getting groomed for the picnic at the Whittier Museum on Saturday, December 3, at 11:30 a.m.

Teddy Bear's favorite food will be served; there will be contests to enter; prizes to win. Seating is limited, so send your reservations in early to Virginia Boles, 1761 East Woodcrest, La Habra 90631. 691-4227

Members \$12, non-members \$15, children 15 and younger \$10. Make checks payable to Whittier Historical Society.

NEW HISTORICAL GROUP FORMS

WHS Charter Member Nadine Hathaway is finally seeing a long-time dream come true. She has just founded the RANCHO SANTA GERTRUDES HISTORICAL SOCIETY, a first for the City of Santa Fe Springs. Nadine has been an active member of SFS's Historical Committee but in recent years has seen the critical need for an independent society. The new historical society received its incorporation papers as of August 9, 1983.

Local residents who may have gone to Little Lake School, or who live or work in SFS and are interested in preserving its history should contact Nadine at 944-6563. Jane Gothold, also a WHS member and President of the Pacific Archaeological Society, and Joe Da Rold, who authored "The History of Santa Fe Springs," are the incorporating directors, along with Nadine.

The first general meeting of "RSG" will be a picnic lunch held in Los Nietos Park on Sunday, October 16 at 2 p.m. Charter memberships will be available through February 1984 and are available to all interested parties.

WHS wishes our new neighboring colleagues a long, active, and successful life!

VILLAGE SPECIALTY SHOP OPEN HOUSE

Five Village shops have joined together to sponsor an "Open House" on Sunday afternoon November 6, and have invited members of WHS. Refreshments will be served and door prizes drawn hourly - plus ten per cent of any purchase made that day, you may designate to go to WHS.

More information about this later.

Etcetera

AN 1898 CIVICS LESSON*

"The following is a set of rules for the citizen's guidance, a kind of citizen's decalogue. When their hearts as well as their minds have been reached, they may be taught to say:

- I must not cheat the State.
- I must not cheat the railroads.
- I must give a due share of my time and energy to public affairs.
- I must vote whenever it is my privilege to vote.
- I must not debauch my fellows by bribing them.
- I must not accept a bribe of any kind.
- I must make a decent living if it is in my power.
- I must prefer my country to my party.
- I must tolerate the opinions of others."

*From First Lessons in Civics, a text by Forman, published in 1898.

GOOD NEWS

Angel's Flight has found a new home. Sharon Shaw, director of Heritage Square in Highland Park, says that Angel's Flight will be added to their growing array of Victorian gems.



The CABLE CARS will be back in San Francisco on June 24, 1984.

DISCOVERY DAY

Saturday, December 22, is Discovery Day at the Natural History Museum in Exposition Park. From 10 a.m. to 4 p.m. the museum will provide experts to identify your collectibles and provide information about their care. Questions? Call Discovery hotline 744-3342.

DOES ANYONE KNOW WHAT BECAME OF HELEN DUNLAP who lived on Sorensen Lane north of the John M King ranch? She was an artist (oil painter) and T. C. (Bud) Landreth said his mother modeled for her 80 years ago. 693-1194.

WHOOOPS! In the "Rancho Azusa" article on page 10 of the August Gazette, second last sentence in the third last paragraph should read: City of Bradbury not Industry.

MEMBERSHIP

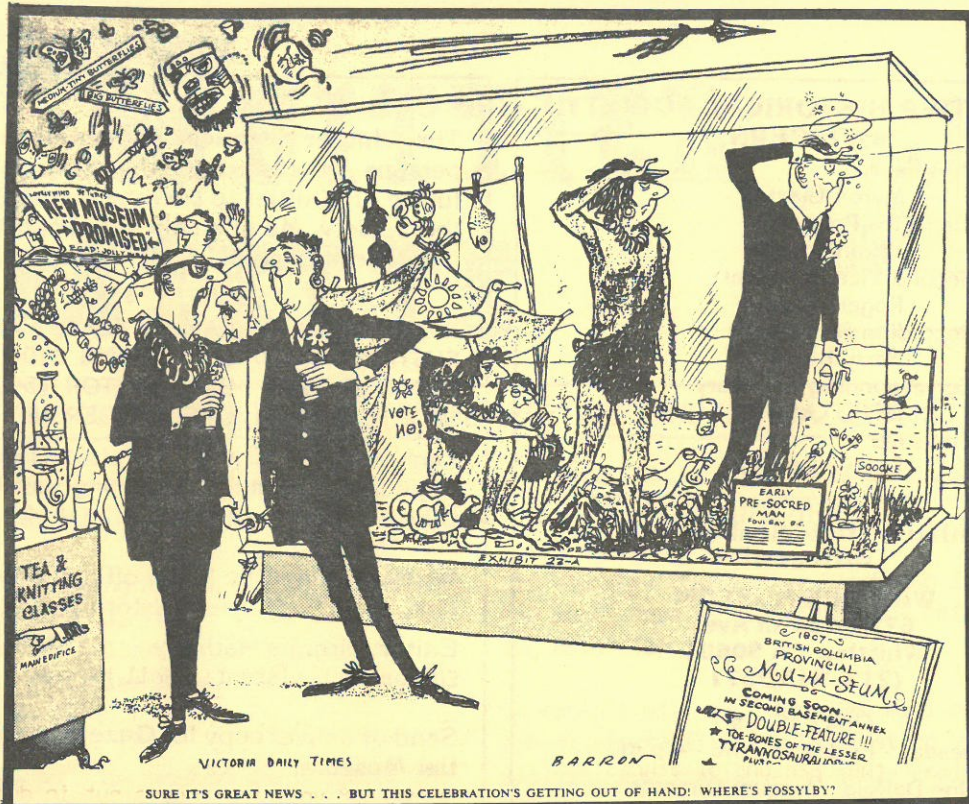
WHS has passed the 600 mark in memberships, however, we are about 385 short of the goal set by the Board of Directors for December 31, 1983.

TIME IS MONEY . . .

Museum Director Joe Da Rold reports a record 648 volunteer hours put in during the month of July. This includes Museum Buffs working on construction, helpers in Archives, Docents on tour duty, in training, and in the Gift Shop, National Charity helpers (particularly at the Village Festival), the Office Staff, the Oral History coordinator, and manpower from the court referral program. These 648 hours do not include the time put in by Board members, committee members, docents from the Bailey House and Pio Pico Mansion, and the "just plain helpful, caring folks" who always come to our rescue. Is there any wonder that the museum is growing so fast?

IN MEMORIUM

Our sympathy is extended to the family of Mrs. Marion McClure Keasby.



WEIGHT IS MONEY, TOO . . .

Have you remembered to take your paper, glass and aluminum to the Whittier Lions Recycling Center? The Center (Mar Vista at Whittier Blvd.) credits WHS on its ledger and we receive a check each month. Newspapers

bring the most money, although the rate is .012/lb., because the weight adds up fast. Glass is currently being recycled at .007/lb. and aluminum at .15/lb. The Center is open Saturday mornings, from 9-12 noon. Get your neighbors involved, too.

APPLICATION FOR MEMBERSHIP IN THE WHITTIER HISTORICAL SOCIETY

NAME _____ Date _____

(Include Spouse's Name)

Address (Street) _____ Telephone _____

City _____ State _____ Zip _____

Enclosed is my check payable to the Whittier Historical Society in the amount of \$ _____ for a(n) _____ membership.

State type of membership. (See next page for categories and fees.)

Mail check and application form to: Whittier Historical Society, P. O. Box 561, Whittier CA 90608.

WHITTIER HISTORICAL SOCIETY OFFICERS

President
Myron Claxton
First Vice President
Virginia Boles
Second Vice President
Roger Wolcott
Recording Secretary
Barry Kerns
Corresponding Secretary
Ray O'Connor
Treasurer
Evelyn Larkins

Whittier Historical Society offices at

WHITTIER MUSEUM
6755 Newlin Ave.
Whittier, CA 90601
(213) 945-3871

Office Hours
Tuesday - Friday 10 a.m. - 4 p.m.
Joe DaRold, Museum Director

The Whittier Historical Society invites all persons interested in the history and future of Whittier to become members of the Society. Membership year begins the date dues are paid.

STUDENT \$5
INDIVIDUAL \$10 FAMILY \$15
SUSTAINING \$50 SUPPORTING \$100
GRANTOR \$250 BENEFACTOR \$500
SPONSOR \$1000 LIFE MEMBERSHIP \$2500

Corporate memberships are also solicited and begin with \$50 for a Sustaining membership. Other categories are as above.

Whittier Gazette is the official publication of the Whittier Historical Society.

Editor: Virginia Mathony 945-3871
Editorial Assistant: Phil Wintner

Send or deliver copy for **Gazette** to Whittier Museum.

Whittier Historical Society

P.O. Box 561

Whittier, California 90608

NON-PROFIT ORG.

U.S. POSTAGE

PAID

Whittier, CA
Permit 202

DATED MATERIAL

Mrs Anna W Benson
6319-A Comstock Ave
Whittier CA 90601

3