

The Old Ranch House



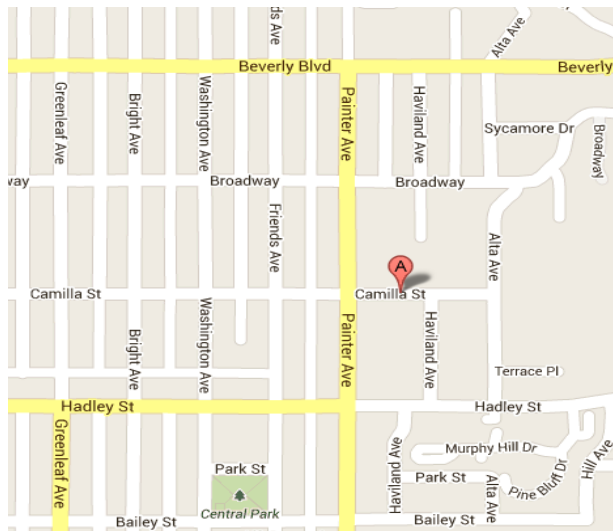
China cabinet in dining room



Antique horsehair loveseat



Woodfire stove with antique furnishings



The Bailey House can be found at 13421 E. Camilla St., right off of Painter Ave. It is four blocks from Whittier College and a 15 minute walk from Uptown Whittier. Parking is available on Camilla St.



Whittier Historical Society

Whittier Museum: 6755 Newlin Ave, Whittier, CA 90601
 Phone: (562)-945-3871
 Email: info@whittiermuseum.org
 Bailey House and Park: 13421 E. Camilla St, Whittier, CA 90601

Whittier Historical Society

THE BAILEY HOUSE AND PARK

We welcome thee to Whittier's first residence



13421 E. Camilla St, Whittier, CA 90601

Guided Tours on Sundays, 1-4pm
School Tours by appointment only,
Monday and Friday
Phone: (562)-945-3871

The History of the Bailey House



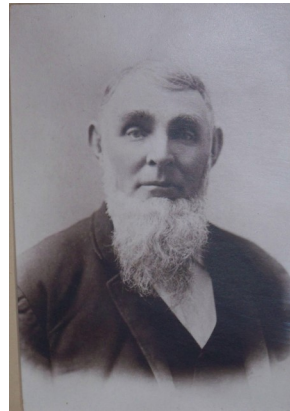
Located on its original site at 13421 E. Camilla Street, this simple, six-room wooden structure was the home of Whittier's first

settlers, Jonathan and Rebecca Bailey, from 1887 until 1894. The Thomas Ranch, acquired by John M. Thomas in 1880, was purchased by Chicago Quaker Aquila Pickering's business, the Pickering Land and Water Company, for \$55 per acre. Bailey, then 68, was elected President of the Company, and moved to the Old Ranch House in 1887 to help found this fledgling new Quaker community.

The Bailey house stood as a conduit for local business and as a community hub for much of early Whittier's history. As a religious leader, "Uncle Jonathan" held many Quaker services, including the town's very first, in his household. In 1892, the Bailey's invited the entire population of the small town to the ranch for their Golden Anniversary, and the turnout shows just how important this old farmer was for the young community.

The Old Ranch House hosts a variety of antiques from early Whittier, including a few pieces originally owned by the Bailey's themselves. Visitors can come visit the house and view the many historic treasures donated by benefactors of the Whittier Historical Society and relatives of the Bailey family.

THE BAILEYS



Jonathan Bailey (1819-1904)



Rebecca Bailey (1821-1898)

ARTIFACTS



Jonathan's Rocking Chair



Rebecca's Rocking Chair



The Lincoln Bookcase



Coal-burning fireplace



Cistern in back yard



Period wagon in shed

The Old Ranch House Today

In 1977 the Bailey House was added to the National Register of Historic Places. It has been preserved and cared for by the Whittier Historical Society and today operates as an exhibit of early Whittier history. The house is furnished with a mix of original furnishings and other period pieces, providing an accurate picture of a late 19th century homestead. Outside, Rebecca's garden has been kept alive with dedication from volunteers with its stunning display of flowers and herbs, giving the outer façade of the house a charming demeanor. Docents trained by the Society conduct tours of the House and its garden on Sundays, starting with the first tour at 1 pm and ending with the last tour at 3:30. Additionally, they also give tours to school children on Tuesdays and Thursdays, keeping the memory of old Whittier alive in the minds of younger generations.

